



interscience

Catalog

Scientific equipment for microbiology

interscience

Our quality for your lab!

Since 1979, **interscience** has been inventing, manufacturing and ensuring lifetime support for the preparation and analysis of samples in microbiology labs.

Made in France, **interscience** products are publicly acclaimed by users for being highly efficient.

Our heavy investment in R&D enables us to provide the most reliable products on the market. Today **interscience** is recognized throughout the world: **our products are used in more than 85 countries**.

We stand behind our products with worldwide service.

At your service to give you the best information, technical advice and support, we are committed to provide you with the products that guarantee the most enjoyable experience.



Emmanuel Jalenques
Chief Executive Officer



Jules Jalenques
Chief Executive Officer

interscience

ABOUT US

1979

François Jalenques, physicist, creates **interscience** (Paris, France).



François Jalenques

1979

With Dr. Ed Campbell, launching of the automatic plater **Spiral® DS**.

2002

Opening **interscience** USA/Canada (Boston, USA).

2006

Launching of the **Scan®** automatic colony counter.

2008

Opening **interscience** China (Shanghai, China).

2009

10,000th BagMixer® sold.

2010

Launching of the **Plate & Count System®** and the easy**Spiral®**, 3rd generation of Spiral® platers.



interscience
R&D center and manufacturing plant

2011

R&D center and manufacturing plant extension (Mourjou, France).

2012

Launching of the **FlexiPump®** range
Launching of the easy**Spiral Dilute®**

2013

Launching of the **JumboGravimat®**

2014

Launching of the **BagMixer® S & SW**

2015

Launching of the **DiluFlow®** range
Launching of the **Scan® 4000**

Table of contents

Sample preparation

BagSystem®

How to prepare your sample?6

Blender bags **NEW SIZE**

Why use a filter bag?7

BagFilter® **NEW SIZE**8

BagPage® **NEW SIZE**9

BagLight® **NEW SIZE**10

RollBag®11

Gravimetric dilutors

The best solution for your dilutions12

DiluFlow®13

DiluFlow® Pro14

DiluFlow® Elite15

Lab blenders

Lab blenders range16

MiniMix® 10017

Unique features18

BagMixer® 40019

JumboMix® 350020

BagMixer® Pack21

BagTools® accessories

BagPipet®, BagTips®, BagRack®,

BagClip®22

BagOpen®, BagSeal®, PetriPile®23

Dispensing pumps

Now dispensing is easy24

FlexiPump®25

FlexiPump® Pro25

Microbiological analysis

Automatic platers

Why choose the Spiral® method?26

easySpiral®27

easySpiral Pro®27

A revolution in serial dilutions!28

easySpiral Dilute®29

How does it work?30

More than 35 years of experience31

Colony counters

& inhibition zone readers **NEW**

Scan® 10032

Scan® 30033

Scan® 50034

Scan® 120035

Unbeatable image quality36

Scan® 4000 **NEW**37

Scan® software38

Plate & Count system® + dataLink™39

Hygiene & security

Autoclave deodorant

Anabac®41

Product specifications41

Customer support47

To order48

Contact us48

Product made for INTERSCIENCE
by Interlab, an ISO 9001 certified company



From sample preparation...

3 Homogenizing the sample

- The sample is homogenized with the **BagMixer**[®]. There is no contact between the sample and the machine to avoid cross-contamination.
- The bacteria are quickly extracted from the sample without being destroyed.



🕒 1 min.



4 Organizing the samples

- The homogenized samples are closed with **BagClip**[®] and stored in the **BagRack**[®].



2 Diluting the sample

- Weigh the sample with the **DiluFlow**[®] dilutor.

🕒 1.5 s/precision: > 99 %



- **DiluFlow**[®] dilutor automatically adds the appropriate mass of diluent.

🕒 8 s/precision: > 99 %

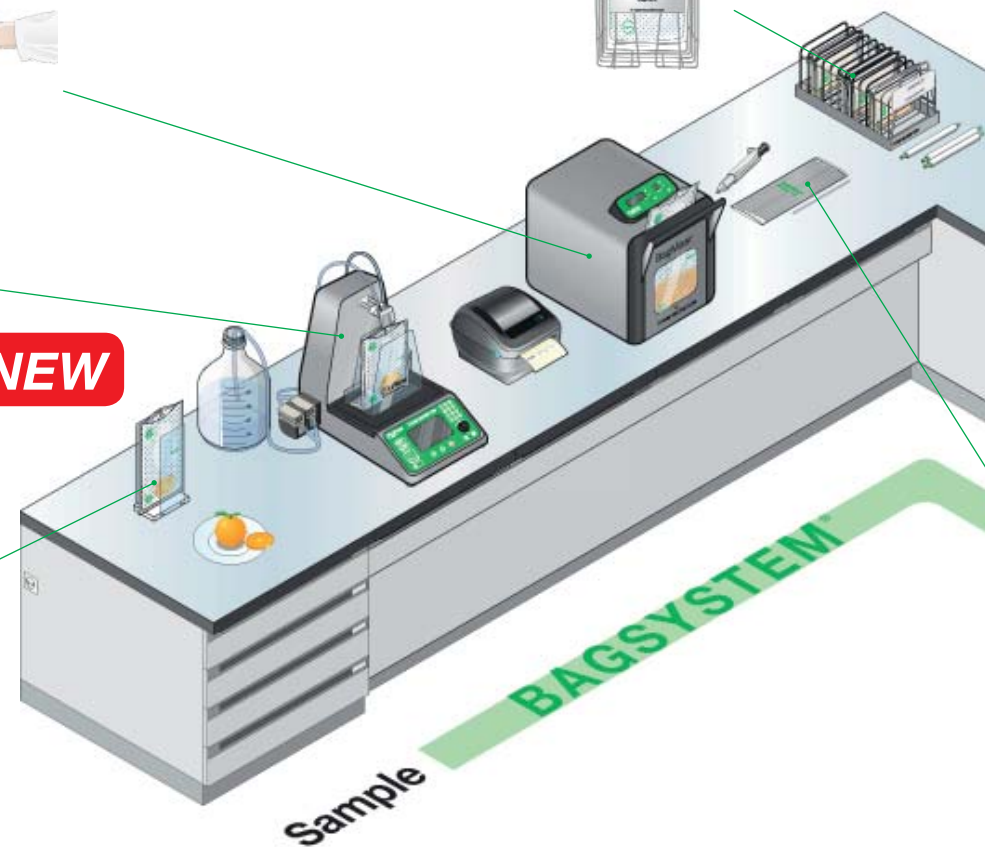


1 Collecting the sample

- Place the sample in a **BagPage**[®] filter bag. The bag stands upright with a **BagOpen**[®].

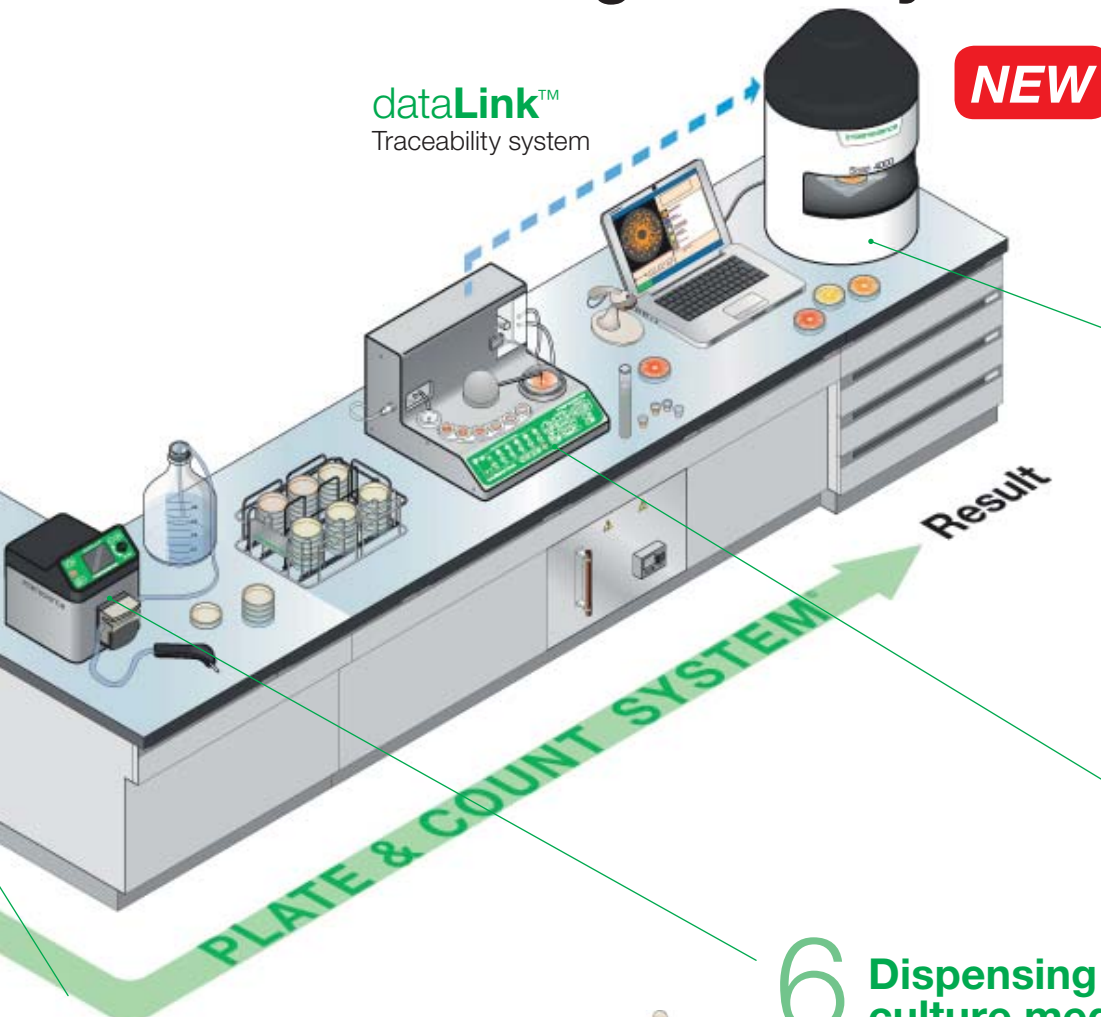


NEW



...to microbiological analysis

interscience



dataLink™
Traceability system

NEW




8 Counting the colonies

- With the automatic **Scan®** colony counter, get microbiological results in 1 click. Images and results are automatically saved on your computer to ensure traceability.



🕒 5 sec./precision: > 98 %

CFU images/results/samples data available in:

-  Excel™ file
-  Printed PDF report
-  Recountable Scan® file

7 Automatic plating

- Place your filtered sample in a beaker.
- The spiral plater easy**Spiral Dilute®** automatically dilutes and plates the sample on 1 Petri dish, avoiding several manual dilutions. Maximum microbial charge: 1×10^{12} CFU/mL.



🕒 134 sec. (for 1 disinfection, 5 dilutions and 1 plating)/precision: > 98 %

5 Pipet the filtered sample

- With **BagPipet®**, pipet the filtered sample easily thanks to the integrated filter of the bag.



6 Dispensing culture media

- With **FlexiPump®** serial dispensing is precise and efficient.

BagSystem® How to prepare your sample?

The BagSystem® is a full range of products for the quick and safe preparation of the sample before its microbiological analysis.

- ▶ No risk of cross-contamination
- ▶ Accurate results with excellent reproducibility
- ▶ Significantly increases your analyzing capacities

1 Collect the sample



Place the sample in a **BagPage®** or in a **BagFilter®** bag.

2 Dilute the sample



Add the diluent with **DiluFlow®**, gravimetric dilutor.

3 Homogenize the sample



The sample is homogenized with its diluent in the **BagMixer®** lab blender. The filtration of the sample occurs in the filter bag during blending.

4 Pipet the filtrate



Pipet the sample with **BagPipet®**. Filtration is sterile and instant. The sample is ready for plating and analysis.

5 Prepare your media



Prepare your media (in test tubes, bottles, Petri dishes...) for optimal plating of the sample with **FlexiPump®**.

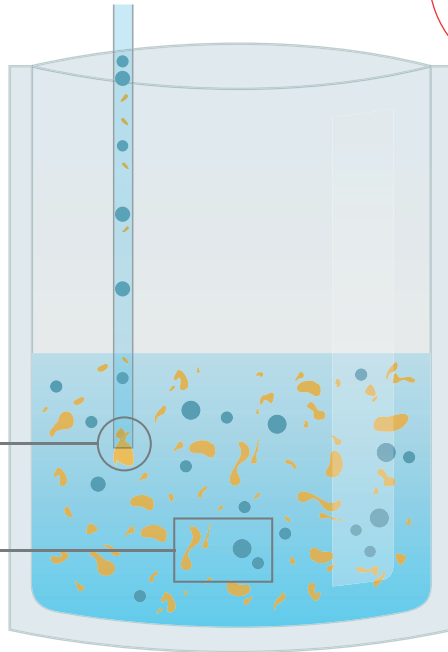
BagFilter® Why use a filter bag?

Standard bag **No filtration**

- Diluted and blended sample particles
- Microorganisms to be analyzed

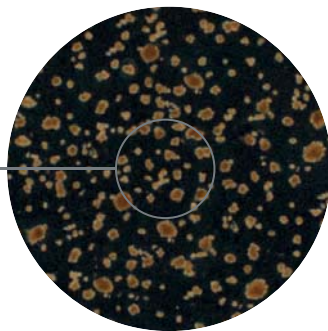
Blocked pipet

Sample mixed with microorganisms



After plating and incubation

Debris or colonies?



Time-consuming and inaccurate results

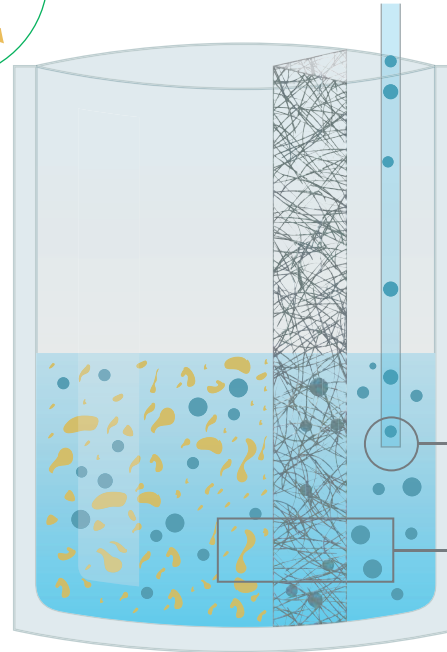


Filter bag **Instant filtration**

- Diluted and blended sample particles
- Microorganisms to be analyzed
- Filter

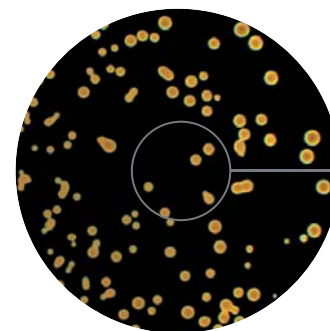
Easy pipetting

Filtered and separated sample and microorganisms



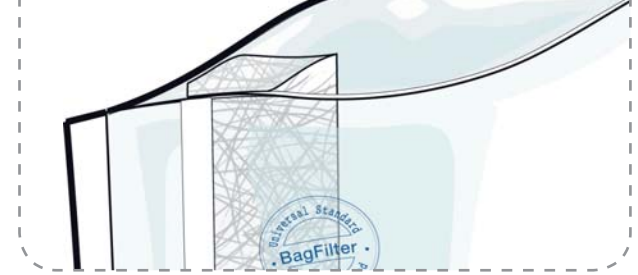
After plating and incubation

Only colonies!



Optimized process and accurate results

BagFilter® Lateral filter bags

ISO
7218ISO
6887-1FDA BAM
Bacteriological Analytical
Manual

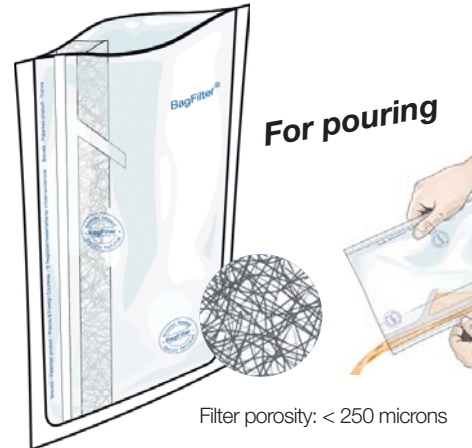
Lateral filter, ideal for fibrous sample

Lateral filter bag for the homogenization and automatic filtration of the sample.



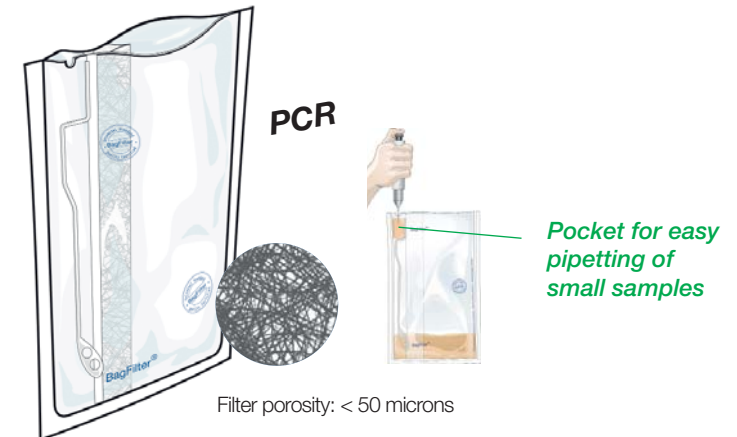
BagFilter® P **NEW SIZE**

- Ideal for pipetting
- Multilayer® multicoated reinforced complex
- Lateral non-woven filter
- Filter porosity: < 250 microns
- Available in 400/2000/3500 mL



BagFilter® S

- Ideal for pouring: with a weld to retain particles
- Multilayer®: multicoated reinforced complex
- Lateral non-woven filter
- Filter porosity: < 250 microns
- Available in 400 mL



BagFilter Pull-Up® Patented

- Ideal for pipetting small volumes: ≤ 1000 µL
- Multilayer®: multicoated reinforced complex
- Lateral non-woven filter
- Filter porosity: < 50 microns
- Available in 400 mL

Technical specifications

BagFilter®	400 P	400 S	Pull-Up® 400	2000 P	3500 P
Max blending volume	400 mL	400 mL	400 mL	2000 mL	3500 mL
Optimal blending volume	50 - 300 mL	50 - 300 mL	50 - 300 mL	400 - 1500 mL	400 - 3500 mL
Bag dimensions	190 x 300 mm	190 x 300 mm	190 x 300 mm	250 x 380 mL	380 x 600 mm
Pack of	25	25	25	25	10
Box of	500	500	500	400	100
Reference	111 425	112 425	111 625	111 200	113 510

Advantages

- ▶ Same bag for homogenization, filtration and pipetting
- ▶ Particle-free solution: easy reading of the colonies
- ▶ Compatible with any blender
- ▶ Approved for food contact

BagPage® Full-page filter bags

ISO
7218

ISO
6887-1

FDA BAM
Bacteriological Analytical
Manual

PATENTED

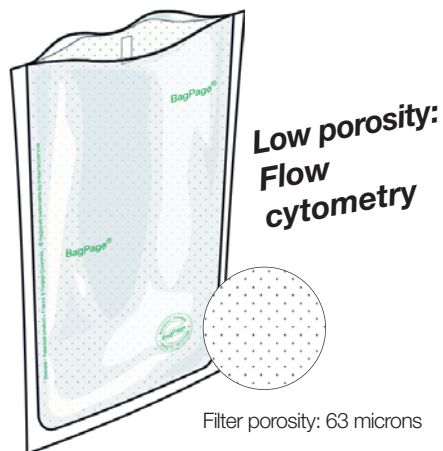


Full-page filter, ideal for pasty sample

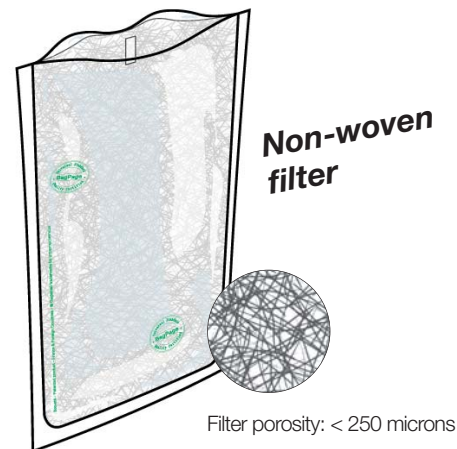
Full-page filter bag for the homogenization and automatic filtration of the sample. A unique system of welding on the bag ensures error-free pipetting.



Filter porosity: 280 microns



Filter porosity: 63 microns



Filter porosity: < 250 microns



Filter porosity: 280 microns

BagPage®+ **NEW SIZE**

- Multilayer®: reinforced multicoated complex
- Full-page calibrated microperforated filter
- Filter porosity: 280 microns
- Also available: **BagPage® U** (round bottom for circulating blenders)
- Available in 100/400/2000/3500 mL

BagPage® F

- For flow cytometry, PCR
- Multilayer®: reinforced multicoated complex
- Full-page calibrated microperforated filter
- Low porosity filter: 63 microns
- Available in 400 mL

BagPage® R

- Multilayer®: reinforced multicoated complex
- Non-woven full-page filter
- Filter porosity: < 250 microns
- Available in 400 mL

BagPage® XR

- 50 % thicker
- For hard-to-blend samples
- Full-page calibrated microperforated filter
- Filter porosity: 280 microns
- Available in 400 mL

Technical specifications

BagPage®	100	+ 400	+ 400 U	+ 400 F	+ 400 R	+ 400 XR	+ 2000	+ 3500
Max blending volume	100 mL	400 mL	400 mL	400 mL	400 mL	400 mL	2000 mL	3500 mL
Optimal blending volume	5 - 50 mL	50 - 300 mL	50 - 300 mL	50 - 300 mL	50 - 300 mL	50 - 300 mL	400 - 1500 mL	400 - 3500 mL
Bag dimensions	95 x 180 mm	190 x 300 mm	190 x 300 mm	190 x 300 mm	190 x 300 mm	190 x 300 mm	250 x 380 mm	380 x 600 mm
Pack of	25	25	25	25	25	25	25	10
Box of	500	500	500	500	500	400	250	100
Reference	121 025	122 025	122 225	122 325	161 025	122 425	122 200	123 010

Advantages

- ▶ Large convenient opening
- ▶ Indication for easy pipetting
- ▶ Instant filtration during homogenization
- ▶ Particle-free solution: easy counting of the colonies
- ▶ Compatible with any blender

BagLight® Non-filter bags

ISO
7218ISO
6887-1FDA BAM
Bacteriological Analytical
Manual

Bag for sample homogenization.



BagLight® PolySilk® **NEW SIZE**

- PolySilk®: polyolefin complex
- Flexible and transparent
- Available in 100/400/2000/3500 mL



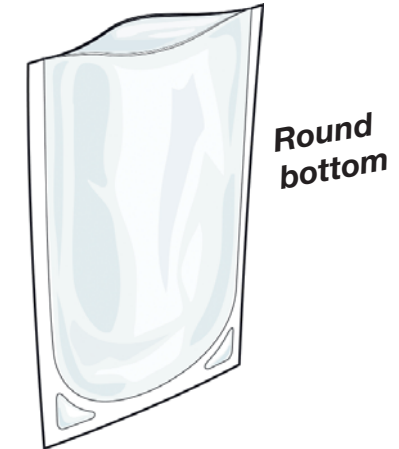
BagLight® PolySilk® HD

- Easy to write on
- High Density PolySilk®
- Rigid, matte and slightly opaque
- Available in 400 mL



BagLight® Multilayer®

- Multilayer®: multicoated reinforced complex
- Reinforced weldings
- Available in 400 mL



BagLight® Multilayer® U

- Designed for circulating blenders
- Multilayer®: multicoated reinforced complex
- Reinforced weldings
- Available in 400 mL

Technical specifications

BagLight®	PolySilk® 100	PolySilk® 400	PolySilk® HD	Multilayer®	Multilayer® U	PolySilk® 2000	PolySilk® 3500
Max blending volume	100 mL	400 mL	400 mL	400 mL	400 mL	2000 mL	3500 mL
Optimal blending volume	5 - 50 mL	50 - 300 mL	50 - 300 mL	50 - 300 mL	50 - 300 mL	400 - 1500 mL	400 - 3500 mL
Bag dimensions	110 x 200 mm	175 x 300 mm	175 x 300 mm	190 x 300 mm	190 x 300 mm	250 x 380 mm	380 x 560 mm
Pack of	25	25	25	25	25	25	25
Box of	500	500	500	500	500	500	250
Reference	131 025	132 025	132 325	132 225	132 125	132 200	133 025

Advantages

- ▶ Excellent value for price
- ▶ Resistant to freezing and high temperatures (from -40°C to 80°C / -40°F to 176°F)
- ▶ Compatible with any blender
- ▶ Approved for food contact

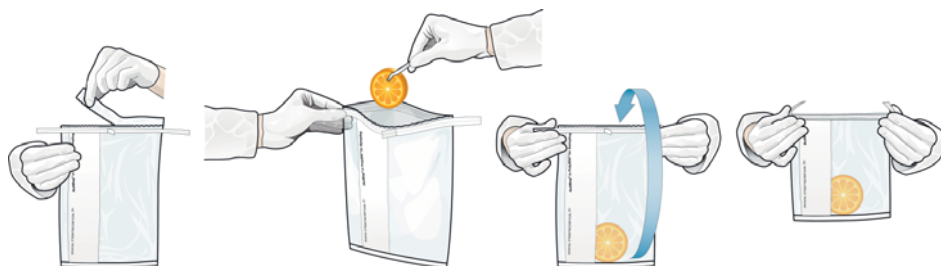
RollBag® Sampling bag

ISO
7218

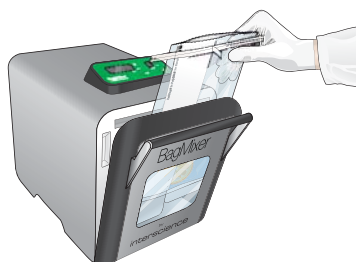
ISO
6887-1

FDA BAM
Bacteriological Analytical
Manual

Bag for sampling and samples homogenization.



Easy transportation of the sample



Collect the sample and blend in the same bag



Stands upright alone!

Handy for pipetting

RollBag® Sampling bag

- Wire-reinforced sealing, stainless steel
- PolySilk®: polyolefin complex
- Flexible and transparent

Technical specifications

RollBag®	1300
Max sampling volume	1300 mL
Optimal blending volume	50 - 300 mL
Bag dimensions	175 x 290 mm
Box of	500
Reference	145 040

Advantages

- ▶ Pre-cut opening of the bag
- ▶ Marking zone
- ▶ Tight closure
- ▶ Resistant up to 80°C
- ▶ Approved for food contact

OEM Custom manufacture

Ask us about bags specifically designed and manufactured for your application.



Choose:

- The type of calibrated filter
- The shape/size/material
- The weldings/openings/compartments
- No marking or your own marking

All our bags are approved for food contact, radiosterilized and compatible with ALL LAB BLENDERS.

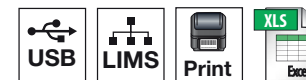
A red sticker is placed on every box as a mark of guarantee of gamma ray treatment.



A certificate is included with each shipment.

DiluFlow®

The best solution for your dilutions



GeckoGrip system

- No more adhesive gums!
 - Ultra adhesive, hygienic
- PATENTED**

World's fastest dilutor

- Only 8 s to dispense 225 mL⁽³⁾

Robotic arm⁽²⁾

- Easy sample insertion
- Avoids contamination
- Saves time

Up to 6 diluents

- With 4 extra connectable pumps⁽¹⁾

Ultra low profile

- Perfect for use in a laminar flow
- Ergonomic: No more musculoskeletal disorders

Superior quality

- Watson Marlow™ pumps
- 304L stainless steel casing

High accuracy weighing scale

- Weighing accuracy up to 99 %
- Magnetic BagOpen®

LightCode

- LED color on status and accuracy

Removable DripTray

- Easy to keep your DiluFlow® clean
- PATENTED**



(1) Only on DiluFlow® Elite (2) Only on DiluFlow® Pro and DiluFlow® Elite (3) Dilution time for a 25 g sample diluted at 1/10 on a DiluFlow® Elite with booster kit

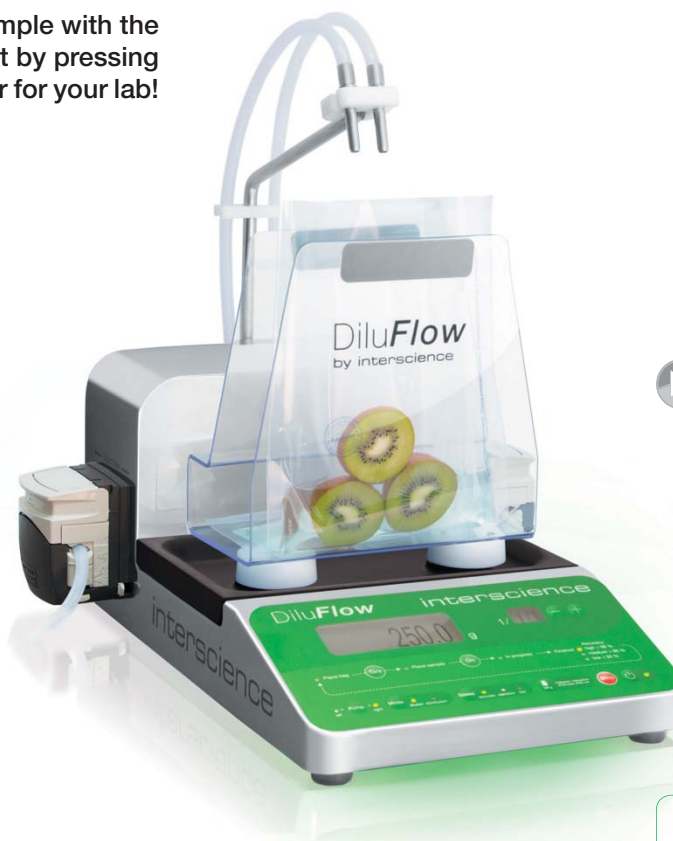
DiluFlow® Gravimetric dilutors



DiluFlow® is designed for the automatic dilution of a solid sample with the appropriate weight of diluent. You can dilute your sample just by pressing 2 keys. Easy-to-use, DiluFlow® is the perfect entry level dilutor for your lab!

Key features

- Ultra low profile: easy use under a laminar flow
- LightCode: Color status LED
- Patents: GeckoGrip gripping system, removable DripTray, magnetic BagOpen® (patented shape)
- Warranty: 1 year
- Booster kit (in option): up to x 2 times faster
- Traceability: Printer / Monitoring software (data export to Excel™, Open Office™, Libre Office Calc™, csv, printer)
- Connection: RS232 output for printer / USB output for a computer / Jack output for foot pedal
- Resolution up to 200 g: 0.01 g
- Dilution time: < 9 s (for a 25 g sample diluted at 1/10 with booster kit in fast mode)
- Dilution factor: 1/2 to 1/99
- Max number of pumps: 2 integrated
- Weighing accuracy: 0 g to 100 g: ± 0.05 g / 100 g to 3000 g: ± 0.1 %
- Dilution accuracy: > 98 %
- Weighing range: from 0.1 g to 3000 g
- Maximum weight without support: 4500 g



[Demo video www.interscience.com](http://www.interscience.com)

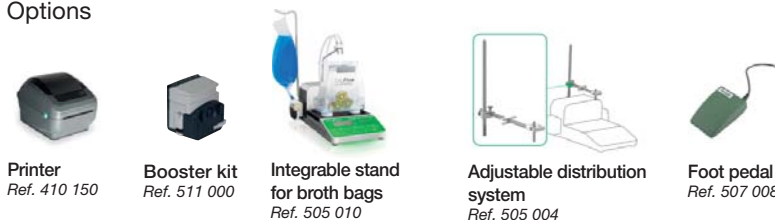


Delivered with: 1 dispensing arm, 1 DripTray 400, 1 or 2 pumps, 1 dispensing assembly (GL45 - ø 6.4 mm) per pump, monitoring software, USB cable, power cable, 1 BagOpen® 400 for dilutors, user's manual, 10 GeckoGrip, free bag samples.

Technical specifications

DiluFlow®	Single pump	Double pump
Maximum weight	3 000 g	
Power	100-240V~ 50/60 Hz	
Size (w x d x h)	31 x 44 x 38 cm	37 x 44 x 38 cm
Weight	9.6 kg	12 kg
Reference	501 103	501 203

Options



Applications

- Microbiological analyses
- Gravimetric dilutions / Liquids dispensing

Advantages

- ▶ Easy-to-use
- ▶ Distribution and weighing functions
- ▶ Compatible with any container

DiluFlow[®] Pro Gravimetric dilutors

ISO
7218ISO
6887-1

DiluFlow[®] Pro is designed for the automatic dilution of a solid sample with the appropriate weight of diluent. Its traceability features enable the recording of all the operations. Equipped with a high speed robotic arm, it offers the best solution for your dilutions!

Key features

- Ultra low profile: easy use under a laminar flow
- LightCode: Color status LED
- Patents: GeckoGrip gripping system, removable DripTray, magnetic BagOpen[®] (patented shape)
- Warranty: 1 year
- Booster kit (in option): up to x 2 times faster
- Traceability: Printer / Monitoring software (data export to Excel[™], Open Office[™], Libre Office Calc[™], csv, printer)
- Connection: RS232 output for printer / USB output for a computer / Jack output for foot pedal
- Resolution up to 200 g: 0.01 g
- Dilution time: < 9 s (for a 25 g sample diluted at 1/10 with booster kit in fast mode)
- Dilution factor: 1/2 to 1/99
- Max number of pumps: 2 integrated
- **Weighing accuracy: 0 g to 100 g: ± 0.05 g / 100 g to 5000 g: ± 0.1 %**
- **Dilution accuracy: > 99 % (in standard or accurate mode)**
- **Weighing range: from 0.1 g to 5000 g**
- **Maximum weight without support: 7000 g**
- **Robotic arm for easy sample insertion**
- **Jumbo kit option for 3500 mL bags**



 [Demo video www.interscience.com](http://www.interscience.com)

Traceability:



Applications

- Microbiological analyses
- Gravimetric dilutions / Liquids dispensing
- Precise weighing system
- For samples requiring traceability

Advantages

- ▶ Robotic arm with high speed movements
- ▶ Distribution and weighing functions

Delivered with: 1 or 2 pumps, 1 DripTray 400, 1 protection plate for tubing nozzle, 1 dispensing assembly (GL45 - ø 6.4 mm) per pump, monitoring software, USB cable, power cable, 1 BagOpen[®] 400 for dilutors, user's manual, 10 GeckoGrip, free bag samples.

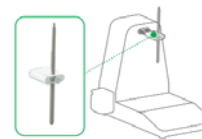
Technical specifications

DiluFlow [®] Pro	Single pump	Double pump
Maximum weight	5 000 g	
Power	100-240V~ 50-60Hz	
Size (w x d x h)	31 x 42 x 38 cm	37 x 42 x 38 cm
Weight	11.8 kg	14.2 kg
Reference	502 105	502 205

Options



Jumbo kit for 3500 mL bags
Ref. 505 006



Adjustable distribution system
Ref. 505 005



Booster kit
Ref. 511 000



Printer
Ref. 410 150

DiluFlow® Elite Gravimetric dilutors



DiluFlow® Elite is designed for the automatic dilution of a solid sample with the appropriate weight of diluent. Its traceability features enable the recording of all the operations. Programmable and connectable with up to 6 diluents, it is available in 1 kg and 5 kg versions. The 1 kg version is specifically designed for cosmetological analyses (sample of 1-5 g requiring high accuracy).

Key features

- Ultra low profile: easy use under a laminar flow
- LightCode: Color status LED
- Patents: GeckoGrip gripping system, removable DripTray, multi-dispensing mode, magnetic BagOpen® (patented shape)
- Warranty: 1 year
- Booster kit (in option): up to x 2 times faster
- Resolution up to 200 g: 0.01 g
- Robotic arm for easy sample insertion
- Jumbo kit option for 3500 mL bags
- **Traceability: Printer / data export to Excel™ / monitoring software / CSV file export on USB stick / Bidirectional connectivity LIMS**
- **Connection: 2 USB outputs (to connect a printer, keyboard, bar-code reader, USB stick)**
 1 USB port (to connect a computer)
 Jack output (to connect a food pedal, handy gun)
 Ethernet connection for LIMS
- **Dilution time: < 8 s**
 (for a 25 g sample diluted at 1/10 with booster kit in fast mode)
- **Dilution factor: 2 to 1000, editable fractions**
- **Weighing accuracy: DiluFlow® Elite 5 kg: 0 g to 100 g: ± 0.05 g / 100 g to 5000 g: ± 0.1 %**
 DiluFlow® Elite 1 kg: 0 g to 20 g: ± 0.01 g / 20 g to 1000 g: ± 0.1 %
- **Dilution accuracy: > 99 % (in standard or accurate mode)**
- **Max number of pumps: 2 integrated + 4 external**
- **Weighing range: from 0.1 g to 5000 g (DiluFlow® Elite 5 kg) / from 0.1 g to 1000 g (DiluFlow® Elite 1 kg)**
- **Maximum weight without support: 7000 g (DiluFlow® Elite 5 kg) / 1500 g (DiluFlow® Elite 1 kg)**

Delivered with: 1 or 2 pumps, 1 DripTray 400, 1 protection plate for tubing nozzles, 1 dispensing assembly (GL45 - ø 6.4 mm (Elite 1 kg: ø 3.2 mm)) per pump, monitoring software, USB cable, USB stick, power cable, 1 BagOpen® 400 for dilutors, user's manual, 10 GeckoGrip, free bag samples.



[Demo video www.interscience.com](http://www.interscience.com)

Traceability:



Applications

- Microbiological analyses
- Gravimetric dilutions / Liquids dispensing
- Precise weighing system
- For samples requiring traceability

Technical specifications

DiluFlow® Elite	1 kg: Single pump	1 kg: Double pump	5 kg: Single pump	5 kg: Double pump
Maximum weight	1 000 g		5 000 g	
Power	100-240V~ 50/60 Hz			
Size (w x d x h)	31 x 42 x 38 cm	37 x 42 x 38 cm	31 x 42 x 38 cm	37 x 42 x 38 cm
Weight	12.6 kg	14.8 kg	12.6 kg	14.8 kg
Reference	503 101	503 201	503 105	503 205

Options



Advantages

- ▶ Up to 6 pumps with 4 connectable pumps
- ▶ Multi-distribution mode, patented
- ▶ Bidirectional connectivity (LIMS)

BagMixer® Lab blenders range

BagMixer® are highly efficient lab blenders for solid sample preparation. With a blender bag, they guarantee optimal microbiological extraction in less than 60 seconds and eliminate all risks of cross contamination.

More than
15,000
BagMixer®
used daily!



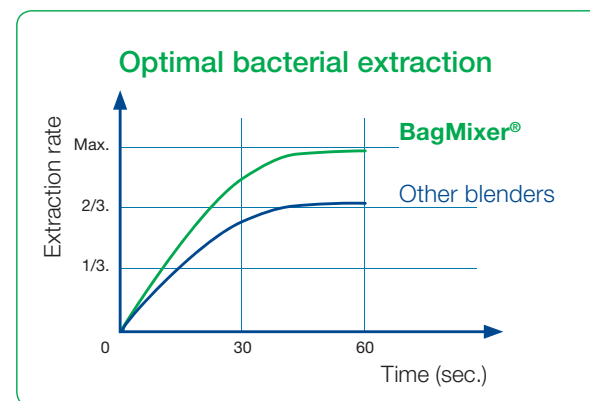
MiniMix® 100
5-80 mL
Sample up to 10 g

BagMixer® 400
50-400 mL
Sample up to 40 g



JumboMix® 3500
400-3500 mL
Sample up to 400 g

- ▶ World best selling lab blender
- ▶ 11 models for most applications (from 5 mL to 3500 mL)
- ▶ 35 years experience
- ▶ Life-time service and spare parts



MiniMix® 100 100 mL lab blenders

ISO 7218 ISO 6887-1 FDA BAM
Bacteriological Analytical Manual

3 YEAR GUARANTEE SHOCK ABSORBERS LIFE-TIME GUARANTEE WINDOW DOOR LIFETIME WARRANTY

The MiniMix® 100 is designed for the blending of small samples. Thanks to the adjustable paddles, your blending is more accurate and efficient.



[Demo video](#)
www.interscience.com

MiniMix® 100 P CC

- Multifunction digital screen
- Variable speed (3, 6, 9, 12 strokes/sec.)
- Variable blending time (1 sec. - 1 h or ∞)
- Adjustable blending power (patented)
- Q-Tight® closing
- Click & Clean® removable paddles (patented)
- Side-by-side paddle stop

MiniMix® 100 W CC

- Multifunction digital screen
- Variable speed (3, 6, 9, 12 strokes/sec.)
- Variable blending time (1 sec. - 1 h or ∞)
- Adjustable blending power (patented)
- Q-Tight® closing
- Click & Clean® removable paddles (patented)
- Side-by-side paddle stop
- **Window door**
- **Security DripTray**

[Discover the MiniMix® accessories p. 22!](#)

Delivered with: Power cable, user's manual, security DripTray*, free packs of filter bags. (*only on MiniMix® 100 W CC)

Technical specifications

MiniMix® 100	P CC	W CC
Optimal blending volume	5 - 80 mL	
Power	100-127V~/220-240V~ 50-60Hz	
Size (w x d x h)	20 x 37.5 x 20 cm	
Weight	12 kg	11.8 kg
Reference	011 230	013 230

Ideal with the blender bags



BagPage®
100 mL



BagLight®
100 mL

Applications

- Homogenization of all types of samples up to 10 g
- Clinical, pharmaceutical
- Veterinary (biopsy, organ tissue sampling...)
- Molecular extraction (proteins, lipids, DNA...)
- Toxin research (HPLC, GCMS...)

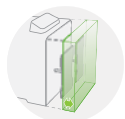
Advantages

- ▶ Silent and resistant
- ▶ Adjustable blending power
- ▶ Easy cleaning: door opens at 270°

BagMixer[®] 400 Unique features by interscience

Adjustable blending power

- Up to 28 kg of pressure per paddle
- PATENTED**



Small/hard samples:
Move the paddles forward
for more pressure



Big/soft samples:
Move the paddles backwards
for less pressure

Super Silent Blending⁽¹⁾

- Less than 48 dB
- Double layer window door



ISO 3744 acoustic test

Q-Tight[®] system

- Applies 250 kg of pressure to avoid leaks from the top

Easy-to-clean

- TotalAccess System: open the door flat on the bench⁽¹⁾
 - Click & Clean[®] removable paddles
- PATENTED**

LiquidSensor⁽²⁾

- Automatic stop of the blending in case of bag leakage
- PATENTED**

Ultra stable⁽¹⁾

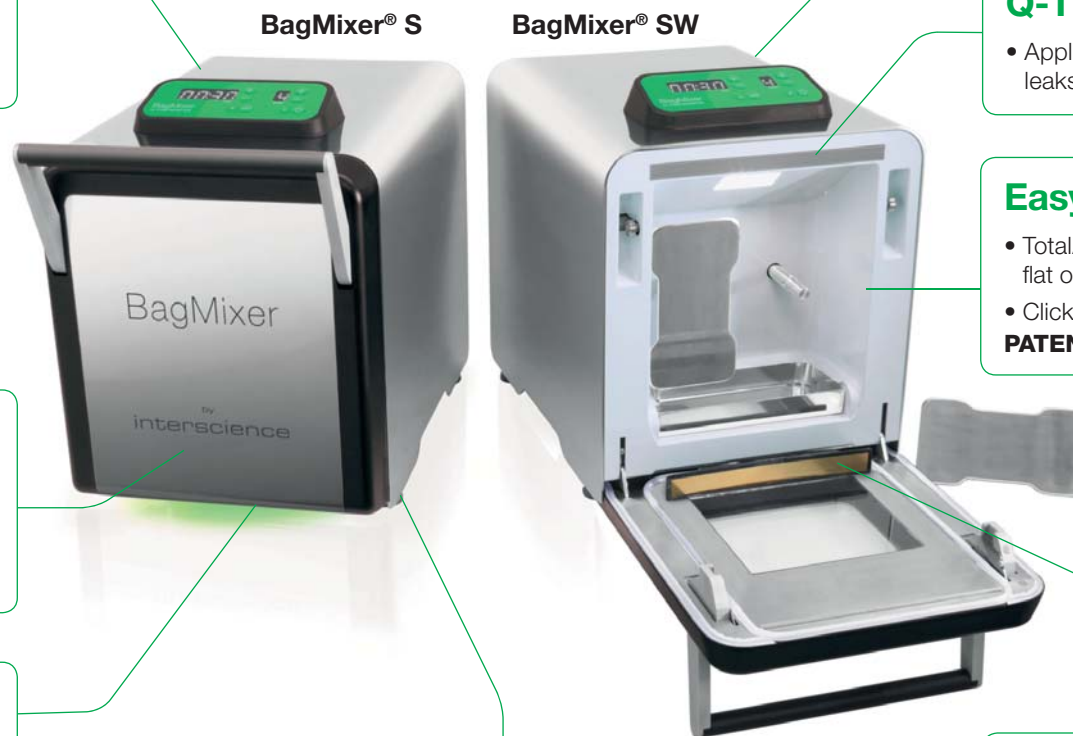
- Low vibration
- Can be used next to a dilutor

Robust and reliable

- High quality 304L stainless steel
- 3 year warranty
- Lifetime warranty on window and shock absorbers

Advanced lighting system

- LightCode System⁽¹⁾: indicates the state of the blending process
- LED lighting inside the blending chamber



(1) Only on BagMixer[®] S&SW (2) Only on BagMixer[®] SW

BagMixer® 400 400 mL lab blenders

ISO 7218 **ISO** 6887-1 **FDA BAM** Bacteriological Analytical Manual

3 YEAR GUARANTEE **SHOCK ABSORBERS LIFE-TIME GUARANTEE** **WINDOW LIFETIME WARRANTY**

World best-seller in labs, BagMixer® 400 is an efficient lab blender for all microbiological analyses.



BagMixer® 400 P

- Fixed speed (8 strokes/sec.)
- Variable time (30-210 secs. or ∞)
- Q-Tight® closing
- Also available in CoolMix® version

BagMixer® 400 W

- Fixed speed (8 strokes/sec.)
- Variable time (30-210 secs. or ∞)
- Q-Tight® closing
- **Window door**
- **Security DripTray**

BagMixer® 400 CC

- Window door
- Security DripTray
- Q-Tight® closing
- **Multifunction digital screen**
- **Variable speed (4, 6, 8, 10 strokes/sec.)**
- **Variable time (1 s - 1 h or ∞/count-down)**
- **Adjustable blending power (patented)**
- **Side-by-side paddle stop**
- **Silent brushless motor**
- **Click & Clean® removable paddles (patented)**

BagMixer® 400 S

- Multifunction digital screen
- Variable speed (4, 6, 8, 10 strokes/sec.)
- Variable time (1 s - 1 h or ∞/count-down)
- Adjustable blending power (patented)
- Q-Tight® closing
- Side-by-side paddle stop
- Click & Clean® removable paddles (patented)
- **Super silent brushless motor**
- **Integrated security DripTray**
- **TotalAccess System**
- **LightCode System**
- **Lighting inside the blending chamber**

BagMixer® 400 SW

- Multifunction digital screen
- Variable speed (4, 6, 8, 10 strokes/sec.)
- Variable time (1 s - 1 h or ∞/count-down)
- Adjustable blending power (patented)
- Q-Tight® closing
- Side-by-side paddle stop
- Click & Clean® removable paddles (patented)
- Super silent brushless motor
- Integrated security DripTray
- TotalAccess System
- LightCode System
- Lighting inside the blending chamber
- **Double layer window door**
- **Liquid Sensor**

Demo video
www.interscience.com

Discover the BagMixer® accessories p. 22!

Delivered with: Power cable, user's manual, security DripTray®, free packs of filter bags. (*in option for BagMixer® 400 P)

Technical specifications

BagMixer® 400	P	W	CC	S	SW
Optimal blending volume	50 - 400 mL				
Power	110-127/220-240 V~ 50-60Hz		100-240 V~ 50-60Hz		
Size (w x d x h)	27 x 38.5 x 28 cm		27 x 41.5 x 26.5 cm	27.5 x 46.5 x 36 cm	
Weight	16.6 kg		16 kg	25.2 kg	25 kg
Reference	021 230	022 230	024 230	025 000	025 100

Ideal with the blender bags



Applications

- Blending of all types of samples up to 40 g
- Microbiology: food, pharmaceutical, clinical, veterinary, environmental...

Advantages

- ▶ **Silent and robust**
- ▶ **Adjustable blending power**
- ▶ **Easy cleaning**

JumboMix® 3500 3500 mL lab blenders

ISO 7218	ISO 6887-1	FDA BAM Bacteriological Analytical Manual
3 YEAR GUARANTEE	SHOCK ABSORBERS LIFE-TIME GUARANTEE	WINDOW DOOR LIFETIME WARRANTY

The JumboMix® 3500 enables fast blending of large samples for numerous applications in microbiology.



Special Trichinella

[Demo video www.interscience.com](http://www.interscience.com)

JumboMix® 3500 VP

- Multifunction digital screen
- Variable speed (1.5, 3, 4.5, 6 strokes/sec.)
- Variable blending time (1 s - 1 h or ∞/count-down)
- Adjustable blending power (patented)
- Q-Tight® closing
- Side-by-side paddle stop

JumboMix® 3500 VW

- Multifunction digital screen
- Variable speed (1.5, 3, 4.5, 6 strokes/sec.)
- Variable blending time (1 s - 1 h or ∞/count-down)
- Adjustable blending power (patented)
- Q-Tight® closing
- Side-by-side paddle stop
- **Window door**
- **Security DripTray**

JumboMix® 3500 WarmMix®

- Multifunction digital screen
- Variable speed (1.5, 3, 4.5, 6 strokes/sec.)
- Variable blending time (1 s - 1 h or ∞/count-down)
- Adjustable blending power (patented)
- Q-Tight® closing
- Side-by-side paddle stop
- Security DripTray
- **Heated door (20°C to 50°C)**

Applications

- 375 g for salmonella
- 75, 325 or 375 g sample for E. Coli O157:H7
- 125 g sample for Listeria and Listeria monocytogenes
- Sample pooling (e.g.: 15 samples of 25 g to reach 375 g)

Discover the JumboMix® accessories p. 22!

Delivered with: Power cable, user's manual, security DripTray®, free packs of filter bags. (*only on JumboMix® 3500 VW and JumboMix® 3500 WarmMix®)

Technical specifications

JumboMix® 3500	VP	VW	WarmMix®
Optimal blending volume	200 - 3500 mL		
Power	100-127/220-240V~ 50-60Hz		
Size (w x d x h)	51.8 x 47 x 47 cm		63 x 50 x 47 cm
Weight	53.2 kg	50.2 kg	63 kg
Reference	031 230	032 230	033 230

Ideal with the blender bags



BagFilter®
3500 mL



BagPage®
3500 mL



BagLight®
3500 mL

Option



JumboStand
Ref. 037 000

Advantages

- ▶ **Silent & robust**
- ▶ **Adjustable blending power**
- ▶ **Easy cleaning: door opens at 270°**

BagMixer® Pack

High-quality and service for every lab:
choose your BagMixer® and combine it with the pack of your choice!



Starter Pack

1 BagMixer®

- + Blender bags:
500 BagFilter® + 500 BagLight®
- + Accessories:
50 BagClip® + 1 BagOpen® + 1 BagRack®



Classic Pack

1 BagMixer®

- + Blender bags:
500 BagFilter® + 500 BagLight®
+ 500 BagPage®
- + Accessories:
1 BagOpen® + 1 BagRack® + 50 BagClip®
1 PetriPile® + 1 BagPipet®
1000 BagTips® Regular



Premium Pack

1 BagMixer®
& 1 DiluFlow®

- + Blender bags:
1000 BagFilter® + 2000 BagLight®
+ 1000 BagPage®
- + Accessories:
1 BagOpen® + 2 BagRack® + 50 BagClip®
2 PetriPile® + 1 BagPipet®
1000 BagTips® Regular

Non-binding photo

BagPipet® & BagTips®

Fixed volume pipet and straw tips

BagPipet® is an autoclavable pipet with fixed volume (0.1 mL / 0.9 mL / 1 mL). It is used with BagTips®, a single-use rigid straw.

BagTips®: its length reaches the bottom of the bag



Autoclavable and calibrated according to the GLP



Advantages

- ▶ Economical
- ▶ No risk of cross-contamination
- ▶ Various volumes (0.1 mL/0.9 mL/1 mL)
- ▶ Light and ergonomic
- ▶ Autoclavable

BagTips® is available in 2 sizes:
Regular (19 cm)/Jumbo (24 cm)

Technical specifications

	BagPipet®	BagTips® (Regular)	BagTips® (Jumbo)
Nom. volume		1.1 mL	2.2 mL
Size (w x d x h)	5 x 3 x 18 cm	L: 190 mm	L: 240 mm
Reference	251 091	252 019	252 024

BagRack®

Storage rack for bags

BagRack® enables clean and methodical storage of bags.



400 mL security driptray in option (ref. 221 042)

Advantages

- ▶ Adapted to various types of bags
- ▶ Stackable
- ▶ Robust
- ▶ All stainless steel
- ▶ Autoclavable

Available for bag sizes:
80 mL, 100 mL, 400 mL, 3500 mL

Technical specifications

BagRack®	80/100 mL	400 mL	3500 mL 4 compartments	3500 mL 2 compartments
Size (w x d x h)	13 x 27.5 x 15 cm	20.5 x 35.5 x 21 cm	43 x 37 x 37 cm	35.5 x 20.5 x 20 cm
Qty of bags	11	10	4	2
Reference	221 010	221 040	221 350	221 352

BagClip®	80/100 mL	400 mL	3500 mL
Length (white clip)	130 mm	195 mm	395 mm
Quantity per pack	50	50	50
Reference	231 010	231 040	231 350

BagClip®

Closing clip

BagClip® allows a temporarily closing in 3 points of any type of bag.



Advantages

- ▶ Handy and easy-to-use
- ▶ Gas and liquid leakproof
- ▶ No contact with the sample
- ▶ Avoids intermediary weldings
- ▶ Robust and long-lasting

BagOpen®

Bag opener/holder

BagOpen® easily opens the sample bag without any contact with the sample. Then pipeting is easy.



Stable and robust!

Advantages

- ▶ Robust
- ▶ Stable base
- ▶ Unbreakable polycarbonate sides

Available for bag sizes:
80 mL, 100 mL, 400 mL, 3500 mL

Technical specifications

BagOpen®	80/100 mL	400 mL	3500 mL
Size	9 x 4.6 x 17 cm	15 x 7.5 x 25 cm	32 x 14.4 x 43.6 cm
Volume	80/100 mL	400 mL	3500 mL
Reference	211 010	211 040	211 350

BagSeal®

Thermal sealing unit

BagSeal® allows a wide, tight and clean sealing of any kind of bag (with/without filter) with a perfect leakproof closure guaranteed.



Advantages

- ▶ Large welding: 245 mm x 5 mm
- ▶ Adjustable heating time
- ▶ All stainless steel
- ▶ Sealing end LED signal

Technical specifications

	BagSeal®
Power	100-127/220-240V - 50/60Hz
Size (w x d x h)	37 x 27.5 x 32 cm
Weight	10.8 kg
Reference	261 000

PetriPile®

Petri dish storage stack

PetriPile® ensures safe handling, transport and storing of Petri dishes.



Advantages

- ▶ For 16 to 36 dishes
- ▶ Stackable
- ▶ Autoclavable
- ▶ All stainless steel

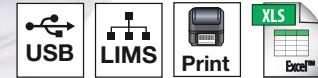
Available for dishes of:
ø 55 mm, ø 65 mm, ø 90 mm, ø 150 mm

Technical specifications

PetriPile®	ø 55	ø 65	ø 90	ø 150
Size (w x d x h)	27.5 x 21 x 13 cm	31 x 22 x 13.5 cm	37.5 x 26 x 13 cm	37.5 x 35.5 x 13.5 cm
Qty of dishes	36			16
Diameter	55 mm	65 mm	90 mm	150 mm
Reference	241 055	241 065	241 090	241 150

FlexiPump®

Now dispensing is easy



Designed for microbiologists

- Select from 3 dispensing modes:
 - Continuous
 - Dose (predetermined volume)
 - Multi-dose (predetermined volume, with an adjustable pause between each dose)
- 32 editable programs
- Rotating button for easy navigation

Easy calibration

- Step-by-step instructions on screen

Precise flow control

- Up to 1 % precision
- Dispenses liquid from 50 µL to 99 L
- Dispensing assembly is entirely autoclavable with bottle

Maintenance free

- Heavy duty polycarbonate top shell and durable stainless steel
- High quality Watson Marlow™ pump heads

Easy dispensing

- Improved dispensing control with the handy gun and the adjustable arm
- Serial dispensing of:



Culture media

e.g.: 9 mL in test tube



Agar media

e.g.: 18 mL in Petri dish



Any liquid diluent

e.g.: 90 mL or 225 mL in bottle or blender bag



FlexiPump® Dispensing pumps for culture media preparation

ISO
7218

FDA BAM
Bacteriological Analytical
Manual

FlexiPump® peristaltic pumps enable serial dispensing of culture media, agar or any liquid diluent from 50 µL to 99 L.



Demo video
www.interscience.com

Traceability:



FlexiPump®

- Single pump head with 3 rollers
- Delivered with 1 dispensing assembly (3.2 mm tube inner diameter)
- Flow rate up to 1.25 L/min.
- Dose volume: 50 µL to 99 L

FlexiPump® Pro

- Double pump head with 6 rollers:
 - double the accuracy
 - double the flow rate
- Delivered with 2 dispensing assemblies (3.2 mm and 6.4 mm inner diameter tubes)
- Flow rate up to 2.5 L/min.
- Dose volume: 50 µL to 99 L
- Traceability: USB, RS 232

Delivered with: 1 or 2* peristaltic Watson Marlow™ pump head(s), 1 set of 3.2 mm dispensing assembly (nozzle + GL 45 bottle connector + filter + tubing + tube weight), 1 set of 6.4 mm dispensing assembly*, user's manual, power cable, USB cable*, free packs of filter bags. (* only for FlexiPump® Pro)

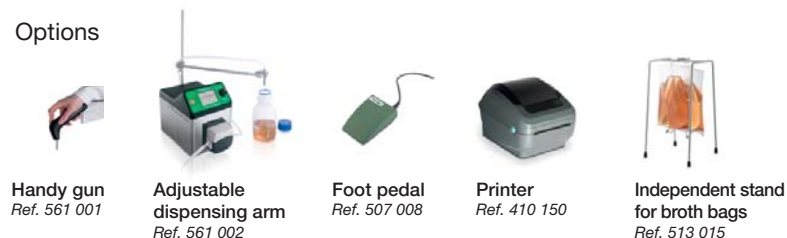
Typical applications

- 9 mL tube filling for dilution
- 18 mL Petri dish filling
- 90 mL and 225 mL in bottle or blender bag

Technical specifications

	FlexiPump®	FlexiPump® Pro
Dose volume	50 µL to 99 L	
Power	100-240 V~ - 50-60 Hz	
Size (w x d x h)	15.5 x 27 x 21 cm	15.5 x 32 x 21 cm
Weight	5.2 kg	5.4 kg
Reference	561 000	562 000

Options



Advantages

- ▶ Precise flow control: up to 1 % precision
- ▶ Easy calibration
- ▶ No contamination: autoclavable dispensing assembly

Spiral[®] Why choose the Spiral[®] method?

ISO
7218ISO
4833-2FDA BAM
Bacteriological Analytical
ManualAOAC
977.27

The Spiral[®] method enables to increase analysis capacity in the lab. It allows a standardized bacterial plating with a sensitivity from 100 to 1×10^7 CFU/mL on 1 Petri dish. No need for manual serial dilutions anymore.

Manual plating method

This method requires repetitive actions: at least **4 dilutions** and **4 successive platings** are necessary to obtain one good and readable Petri dish.

Automatic Spiral[®] method

With this method, make your analysis on **1 single Petri dish!**

- 100 to 1×10^7 CFU/mL on 1 single Petri dish
- Less consumables: up to 75 % savings!
- Full plating cycle in 25 seconds!

easySpiral® Automatic platers

The high-performance automatic plater, easySpiral®, guarantees a standardized and programmable plating without successive dilutions of the sample in 25 seconds only.

 [Demo video
www.interscience.com](http://www.interscience.com)



Traceability:



easySpiral®

- Controlled by microprocessor
- Plating modes: exponential and circle
- Petri dish diameter: 90 mm
- Preset dispensed volume: 50 or 100 µL
- Counting range: from 300 to 1.3x10⁵ CFU/mL

easySpiral Pro®

- Controlled by microprocessor
- Plating modes: exponential, circle and constant
- Petri dish diameter: 90 or 150 mm
- Preset dispensed volume: 50, 100 or 200 µL
- Counting range: from 100 to 1x10⁷ CFU/mL
- Programmable dispensed volume via USB: from 10 to 1000 µL
- Traceability: Excel™, LIMS
- Compatible with dataLink™ traceability system (see p. 39 for more details)

Delivered with: blue dye for testing, syringe with silicone tubing, plating rings for Petri dishes (1 x ø 90 mm and 1 x ø 150 mm*), Spiral® counting grids for Petri dishes: 1 x ø 90 mm and 1 x ø 150 mm*, container stand for testing, 1 set of 2 filters, supervision software*, USB A/B cable*, 1000 DB50 beakers, EnzyClear® detergent, 4 sets of GL45 connectors, 1 set of GL45 connectors double port, stylus, power cable, user's manual.

Technical specifications

	easySpiral®	easySpiral Pro®
Power	100-240V~ 50-60Hz	
Size (w x d x h)	40 x 41.5 x 29 cm	
Weight	16.4 kg	
Reference	412 000	413 000

(*only for easySpiral Pro®)

Options



Housing protection for platers
Ref. 413 001



dataLink™ *
Ref. 410 100



DB50 beakers
Ref. 415 100



Bar-code reader
Ref. 522 000

ISO
7218

ISO
4833-2

FDA BAM
Bacteriological Analytical
Manual

AOAC
977.27

Principle of the Spiral® method:

The sample is deposited on the surface of a rotating Petri dish by a precise measuring micro-pump, according to a logarithmically decreasing Archimedes spiral from the center of the dish to its periphery.

According to the setting, the plating corresponds to 3 or 4 dilutions compared to the traditional method. The volume is calibrated and known at every point of the Petri dish.

After incubation, the colonies appear as a spiral trace on the dish. Counting can be done manually with a counting grid or a Scan® 100, or automatically with a colony counter such as interscience Scan® 300, Scan® 500, Scan® 1200 or Scan® 4000.

Applications

- Microbiological analyses
- Controls of: food quality, bacterial kinetics, MIC of antibiotics, cosmetic, challenge test, pharmaceutical

Advantages

- ▶ Counting range: from 100 to 1x10⁷ CFU/mL
- ▶ Full cycle in 25 seconds
- ▶ Patented disinfection system
- ▶ Programmable volumes via USB
- ▶ Costs reduced up to 75 %

easySpiral Dilute®

A revolution in serial dilutions!



Compact

- 40 cm wide, can be used inside and outside a laminar flow
- Stainless steel housing

High precision

- Glass syringe typical accuracy of 0.5 %
- No more pipet calibration



Automatic disinfection

- Overflow technology cleaning system
- No cross contamination

PATENTED

Cleaning autonomy

- 2 fully autoclavable bottles (diluent & disinfectant) and connectors

High speed automation

- Fast rotating arm
- 1 disinfection, 5 dilutions and 1 plating in 134 sec.

PATENTED

Easy serial dilution

- Choose your dilutions factor
- Do 10^{-5} dilution or more automatically
- No more 9 mL tube preparation

PATENTED

One-touch plating

- Choose from 4 plating modes
- Plate on 55, 90 and 150 mm Petri dishes

easySpiral Dilute® Automatic diluter & plater



easySpiral Dilute® is a 2-in-1 equipment: automatic diluter and plater. It allows you to do 5 x serial 1/10 dilutions and automatic plating on 1 single Petri dish, with a countable range from 30 to 1x10¹² CFU/mL.

Key features

- Controlled by microprocessor
- Petri dish diameter: 55 mm, 90 mm and 150 mm
- Syringe capacity: 1000 µL
- Programmable dispensed volume: from 10 µL to 1000 µL
- Preset volume dispensed: 50 µL, 100 µL and 200 µL
- Counting range: from 30 to 1x10¹² CFU/mL
- Plating modes: exponential, constant, circle, pour plate
- 1 disinfection + 5 dilutions + 1 sample intake + 1 plating of 1 dilution: 134 sec.
- 1 disinfection + 5 dilutions + 1 sample intake + 1 plating of each dilution: 234 sec.
- Filling time (for different sample viscosities) and volume programmable by USB
- Sample mixing before dilution/plating
- Traceability: Excel™, LIMS
- Patented circle mode:
 - 3 dilutions on a 90 mm Petri dish
 - 6 dilutions on a 150 mm Petri dish
- Stylus disinfection system by overflow, 8 bars pressure (Patented)
- Successive plating capacity with the same sample: 20 Petri dishes (50 µL)
- Compatible with dataLink™ traceability system (see p. 39 for more details)



Demo video
www.interscience.com



Delivered with: blue dye for testing, syringe with silicone tubing, plating rings for Petri dishes (1 x ø 55 mm, 1 x ø 90 mm and 1 x ø 150 mm), Spiral® counting grids for Petri dishes: 1 x ø 90 mm and 1 x ø 150 mm, circle mode counting grids for Petri dishes: 1 x ø 90 mm and 1 x ø 150 mm, 1 set of 2 filters, supervision software, USB A/B cable, 1000 DB50 beakers, EnzyClear® detergent, 4 sets of GL45 connectors, 1 set of GL45 connectors double port, stylus, power cable, user's manual.

Technical specifications

	easySpiral Dilute®
Power	100-240V~ 50-60Hz
Size (w x d x h)	40 x 41.5 x 29 cm
Weight	16.4 kg
Reference	414 000

Options



Housing protection for platers
 Ref. 413 001



dataLink™
 Ref. 410 100



DB50 beakers
 Ref. 415 100



Bar-code reader
 Ref. 522 000

Applications

- Microbiological analyses
- Automatic: serial dilutions/plating

Advantages

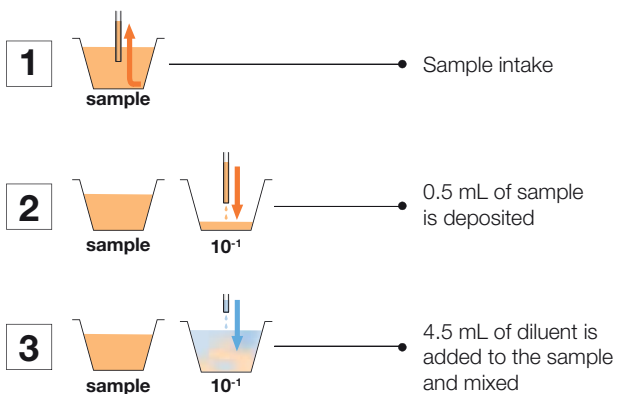
- ▶ One-touch panel for routine serial dilutions and plating
- ▶ As many dilutions as you want
- ▶ Fast: disinfection, 5 dilutions and 1 plating in 134 sec.
- ▶ 50 % less consumables and time

easySpiral Dilute® How does it work?

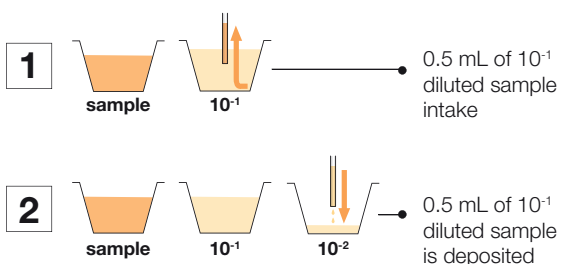
ISO
7218ISO
4833-2FDA BAM
Bacteriological Analytical
ManualAOAC
977.27

easySpiral Dilute® makes automatic serial dilutions and automatic plating very quickly, only 134 seconds for 1 disinfection, 5 dilutions and 1 plating.

1. Dilution cycle



The above dilution cycle is repeated for the next serial dilutions.



Dilution cycle can be repeated as many times as you wish.

2. Plating cycle

Constant mode

Homogeneous surface deposition

50 μ L, 100 μ L, 200 μ L and USB programmable

Exponential mode

Decreasing surface concentration

50 μ L, 100 μ L, 200 μ L and USB programmable

Circle mode

3 or 6 surface dilutions on 1 Petri dish

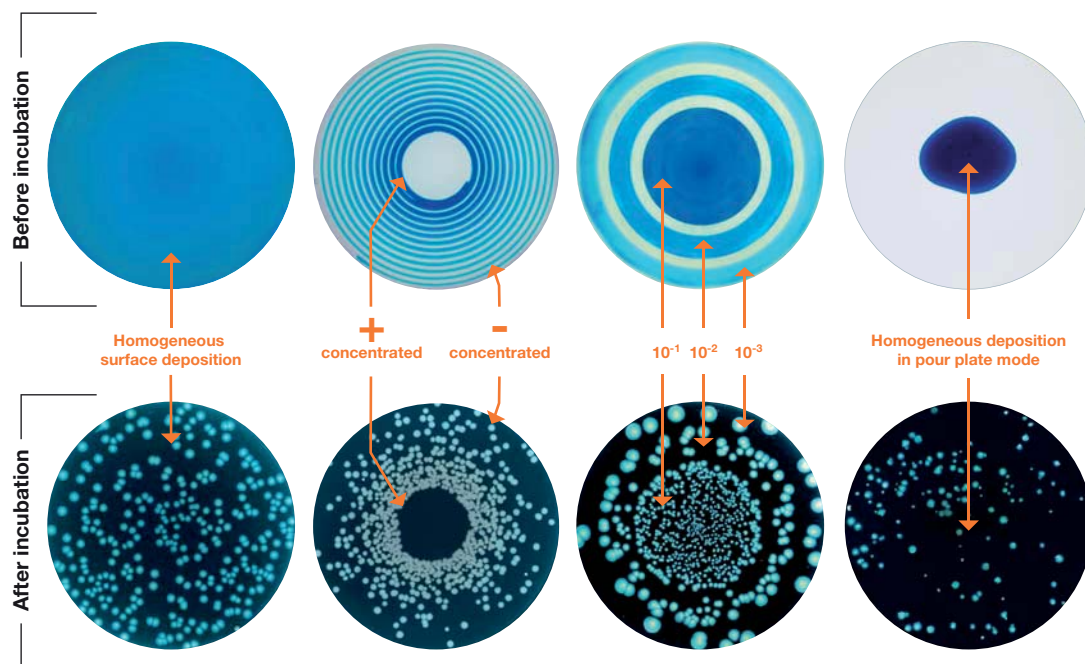
10 μ L inner circle, 16 μ L middle circle and 25 μ L outer circle

Pour mode

Homogeneous deposition in pour plate mode*

50 μ L, 100 μ L, 200 μ L and USB programmable

Examples:



* In pour mode, easySpiral Dilute® deposits one sample drop at the bottom of an empty Petri dish. Then, the user adds the molten agar on top.

Spiral[®] system: More than 35 years of experience

"Solutions to save as much time as possible for creative work"

Dr. Ed Campbell inventor of the Spiral[®] method



François Jalenques and Dr. Ed Campbell

successive dilutions nor intermediary incubations, with a sensitivity from 100 to 10⁷ CFU/mL on 1 Petri dish.

easySpiral[®] offers great advantages:

- No risk of cross contamination
- Standardized operations
- Reliable, accurate and quick results
- Reduction of 75 % of time, steps and consumables

ISO⁴ 4833-2 standard

The **Spiral[®]** technology, validated by A.O.A.C.², ISO³ 4833-2 and ISO³ 7218 standards as the official technique to examine food production, quickly became a reference for various applications such as food microbiology, medical bacteriology, research on preservatives, pharmaceutical and the cosmetological sector.

A revolution in serial dilutions

In 2012, was launched easy**Spiral Dilute[®]**, the first automatic diluter and plater on the market, making the routine 1 disinfection, 5 serial dilutions and 1 plating in 134 seconds with full traceability!

¹ Food and Drug Administration, USA

² Association of Official Analytical Chemist

³ International Organization for Standardization

Automatic plating

In 1973 Dr. Ed Campbell, researcher at the FDA¹, invented the **Spiral[®]** method to automate the routine work of bacterial enumeration.

With François Jalenques, physicist and founder of **interscience**, they developed this process and had it patented in 1992 for more efficient and quick analyses. 3rd generation of **interscience** automatic platers, easy**Spiral[®]** plates 1 dish without



1979
Spiral[®] DS



1996
Spiral[®] DS+



2010
easySpiral[®]



2012
easySpiral Dilute[®]

Scan[®] 100 Manual colony counter



Scan[®] 100 is a manual colony counter equipped with a LED lighting system and an ergonomic hand rest. The Dark Field technology provides indirect, accurate and contrasted lighting of the colonies.

Its USB port ensures traceability by exporting the results without prior software installation and with an error-free export.

Key features

- Adjustable sensitivity of touch surface
- For all culture media: Petri dishes (ø 55, 65, 90, 150 mm), Petrifilm™, Compact Dry™...
- Multifunction digital screen
- Counting: from 0 to 1999 CFU
- USB port: easy data transfer via any software (PC/Mac)
- Dark Field technology for a contrasted view of the colonies
- Adjustable counting beeps: 4 sound levels
- Adjustable LED intensity
- Adapted to any pen
- Built-in storage rack

Comparison of a standard lighting and the Scan[®] 100 lighting

Standard neon lighting:

The light is diffused, the agar and colonies become yellowish. As a result: the contrast is imperfect.

The colonies are difficult to count.



Dark Field technology:

The light is diffused, the colony is perfectly lit on a dark background. As a result: the lighting is accurate and the contrast is optimal.

The colonies are easy to count.



[Demo video](#)
www.interscience.com

Magnifying lens on flexible arm in option

High technology:



Traceability:



Delivered with: quick user guide, white background plate, 90 mm Petri dish adapter, power cable, USB cable, black marker pen.

Technical specifications

	Scan [®] 100
Power	100-240V~ 50-60Hz
Size (w x d x h)	25 x 33 x 17.5 cm
Weight	4.6 kg
Reference	435 000

Options



Magnifying lens for Scan[®] 100
Ref. 435 001



Spiral[®] counting grids: transparent and white diffusing counting grid
3 models:
Spiral DS[®] 90/150 mm - Ref. 435 010
easySpiral[®] 90 mm - Ref. 435 030
easySpiral[®] 150 mm - Ref. 435 035



Wolffhugel counting grids: Transparent and white diffusing counting grid
Ref. 435 020

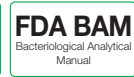


Adapter for Petrifilm™, Sanita-kun™/ Compact dry™:
Ref. 435 002

Advantages

- ▶ All stainless steel, very robust
- ▶ Long lasting white LEDs, adjustable intensity
- ▶ Dark Field lighting
- ▶ Ergonomic hand rest
- ▶ Instant export of results via USB

Scan[®] 300 Automatic colony counter



Scan[®] 300 is an automatic colony counter with the essential features to start the automatic colony counting and is specifically designed for environments of food microbiology (PCA, VRBG, MRS...).

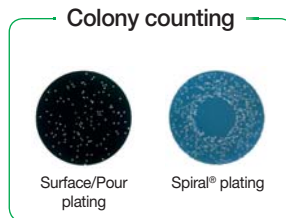
Key features

- CMOS color camera, zoom x28, M12 lens, 1 megapixel resolution
- 6 combinations of lighting and backgrounds
- Motorized background color
- Brightness, contrast and sensitivity are automatically optimized by the software
- Minimum size of detected colony: 0.1 mm
- Automatic separation of clustered colonies
- Creation of polygonal exclusion zones
- Long lasting LED lighting
- Export of data to printed report, Excel[™], PDF, jpg, png, bmp, xls, recountable session
- Software in French, English, Japanese, Chinese, Russian, Spanish, German
- Compatible with dataLink[™] traceability system (see p. 39 for more details)
- Integrated CFR21 part 11: encrypted audit trail, 3 user levels



Demo video
www.interscience.com

Minimum size of detected colony: 0.1 mm



High technology:

Traceability:

Delivered with: Scan[®] software CD-ROM, power cable, 2 validation plates, user's manual.

Technical specifications

	Scan [®] 300
Resolution	1 megapixel
Power	100-240 V - 50-60Hz
Size (w x d x h)	28.5 x 26.5 x 29 cm
Weight	8.4 kg
Reference	436 300

Options



Bar-code reader
Ref. 522 000



Adapter for 55 mm Petri dish
Ref. 436 005

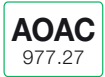
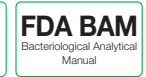


dataLink[™]
Ref. 410 100

Advantages

- ▶ Instant results
- ▶ Traceability: automatic saving of images and results
- ▶ LIMS connection and Bar-code reader
- ▶ Data export to Excel[™]
- ▶ Minimum size of detected colony: 0.1 mm

Scan[®] 500 Automatic colony counter & inhibition zone reader



Scan[®] 500 is an automatic color colony counter providing quick and efficient counting of the colonies on the most common supports. Scan[®] 500 guarantees an excellent reproducibility and the automatic saving of images and results.

Key features

- CMOS color camera, zoom x28, M12 lens, 1 megapixel resolution
- 6 combinations of lighting and backgrounds
- Motorized background color
- Brightness, contrast and sensitivity are automatically optimized by the software
- Minimum size of detected colony: 0.1 mm
- Automatic separation of clustered colonies
- Creation of polygonal exclusion zones
- Long lasting LED lighting
- Export of data to printed report, Excel[™], PDF, jpg, png, bmp, xls, recountable session
- Software in French, English, Japanese, Chinese, Russian, Spanish, German
- Compatible with dataLink[™] traceability system (see p. 39 for more details)
- Integrated CFR21 part 11: encrypted audit trail, 3 user levels
- **Inhibition zone reading with EUCAST, CA-SFM, CLSI and editable database**
- **Detects and counts up to 7 colors on the same dish**



Minimum size of detected colony: 0.1 mm

Colony counting



Surface/Pour plating Spiral[®] plating Chromogenic Petri dishes

Inhibition zone reading



Antibiogram

Conformity:



High technology:



Traceability:



Delivered with: Scan[®] software CD-ROM, power cable, 3 validation plates, user's manual.

Technical specifications

	Scan [®] 500
Resolution	1 megapixel
Power	100-240 V - 50-60Hz
Size (w x d x h)	28.5 x 26.5 x 29 cm
Weight	8.4 kg
Reference	436 000

Options



Bar-code reader
Ref. 522 000



Adapter for 55 mm Petri dish
Ref. 436 005



dataLink[™]
Ref. 410 100

Advantages

- ▶ Instant results
- ▶ Traceability: automatic saving of all data, images and results
- ▶ LIMS connection and bar-code reader
- ▶ Data export to Excel[™]
- ▶ Minimum size of detected colony: 0.1 mm

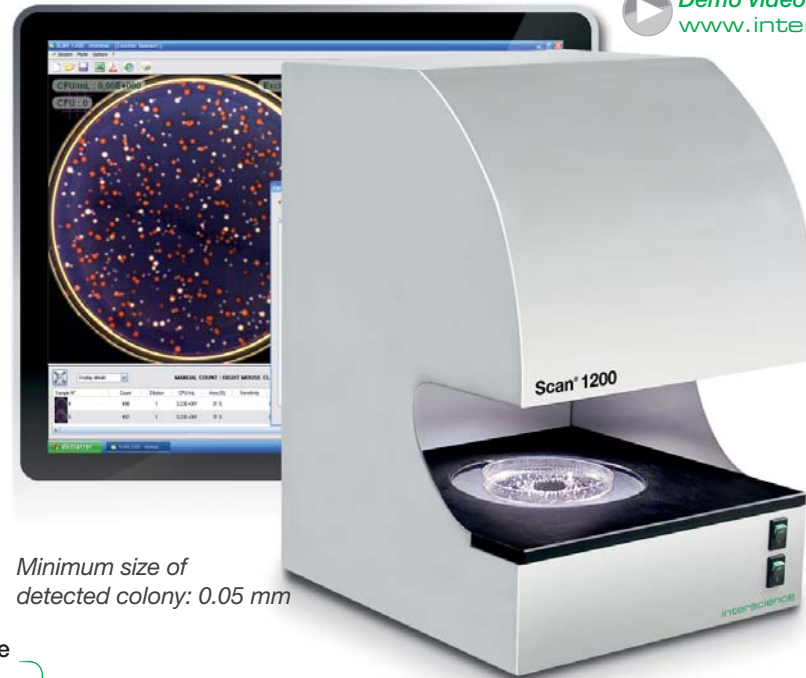
Scan[®] 1200 Automatic colony counter & inhibition zone reader



Scan[®] 1200, high resolution automatic color colony counter, enables an adaptability to all media in labs and a great user comfort with high accuracy, an excellent reproducibility and automatic saving of images and results.

Key features

- 6 combinations of lighting and backgrounds
- Motorized background color
- Brightness, contrast and sensitivity are automatically optimized by the software
- Automatic separation of clustered colonies
- Creation of polygonal exclusion zones
- Long lasting LED lighting
- Export of data to printed report, Excel[™], PDF, jpg, png, bmp, xls, recountable session
- Software in French, English, Japanese, Chinese, Russian, Spanish, German
- Compatible with dataLink[™] traceability system (see p. 39 for more details)
- Inhibition zone reading with EUCAST, CA-SFM, CLSI and editable database
- Integrated CFR21 part 11: encrypted audit trail, 3 user levels
- Detects and counts up to 7 colors on the same dish + 1 color to exclude
- **Minimum size of detected colony: 0.05 mm**
- **HD color CCD camera, zoom x28, HD japanese lens, 1.2 megapixel resolution**



[Demo video](#)
www.interscience.com

Minimum size of detected colony: 0.05 mm

Colony counting

Surface/Pour plating Spiral[®] plating Chromogenic Petri dishes Petrifilm[™] Sanita-kun[™] Compact Dry[™] Filtration membrane

Inhibition zone reading

Antibiogram

Conformity:



High technology:



Traceability:



Delivered with: Scan[®] software CD-ROM, power cable, 3 validation plates, user's manual.

Technical specifications

	Scan [®] 1200
Resolution	1.2 megapixel
Power	100-240 V - 50-60Hz
Size (w x d x h)	28.5 x 26.5 x 37.5 cm
Weight	9.4 kg
Reference	437 000

Options



Bar-code reader
Ref. 522 000



Adapters - 3 models:
Adapter for Petrifilm[™] - Ref. 437 002
Adapter for Sanita-kun[™] - Ref. 437 001
Adapter for Compact Dry[™] - Ref. 437 004



Adapter for 55 mm
Petri dish
Ref. 436 005



dataLink[™]
Ref. 410 100

Advantages

- ▶ Instant results
- ▶ Traceability: automatic saving of all data, images and results
- ▶ Bar-code reader and LIMS connection
- ▶ Data export to Excel[™]
- ▶ Minimum size of detected colony: 0.05 mm

Scan[®] 4000

Unbeatable image quality



NEW

Ultra high resolution camera

- Ultra HD 5 megapixels CCD camera
- Digital zoom x 69
- Live camera image

Beam Splitter

- Avoids reflections of the camera

Integrated CFR21 Part 11

- Electronic signatures, audit trail and securing of the results

White LED Dome

- White LED diffusing lighting without reflections or shadows

Reading on 100 % of the surface of the Petri dish

- Automatic detection and zoom

Largest reading range on the market

- Round ø 55 to 150 mm Petri dishes
- 120 mm square Petri dishes



Scan[®] 4000 Automatic colony counter & inhibition zone reader



Scan[®] 4000 is an ultra HD automatic colony counter and inhibition zone reader. Adapted to all sizes of Petri dishes and media, its lighting system guarantees a great user comfort, high accuracy and excellent reproducibility.

Key features

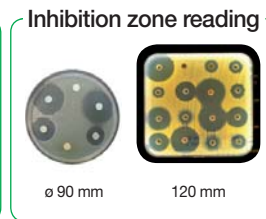
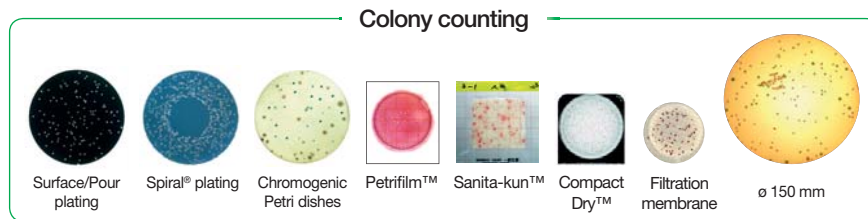
- Brightness, contrast and sensitivity are automatically optimized by the software
- Automatic separation of clustered colonies
- Creation of polygonal exclusion zones
- Export of data to printed report, Excel[™], PDF, jpg, png, bmp, xls, recountable session
- Software in French, English, Japanese, Chinese, Russian, Spanish, German
- Compatible with dataLink[™] traceability system (see p. 39 for more details)
- Integrated CFR21 part 11: encrypted audit trail, 3 user levels
- Inhibition zone reading with EUCAST, CA-SFM, CLSI and editable database
- Detects and counts up to 7 colors on the same dish + 1 color to exclude
- Minimum size of detected colony: 0.05 mm
- **7 combinations of lighting and backgrounds**
- **Ultra HD color CCD camera, zoom x 69, ultra HD japanese lens, 5 megapixels resolution**
- **Counting on round Petri dishes from ø 55 to 150 mm and 120 mm square Petri dishes**
- **Black/white background with no moving parts**
- **White LED dome lighting: reflection and shadow free**
- **Reading on 100 % of the surface of the Petri dish**
- **Bi-directionnality with SIL/LIMS**

Demo video
www.interscience.com

NEW



Minimum size of detected colony: 0.05 mm



Delivered with: Scan[®] software CD-ROM, power cable, 3 validation plates, user's manual.

Technical specifications

	Scan [®] 4000
Resolution	5 megapixel
Power	100-240 V - 50-60Hz
Size (w x d x h)	47 x 47 x 64 cm
Weight	25 kg
Reference	438 000

Options



Conformity:



Advantages

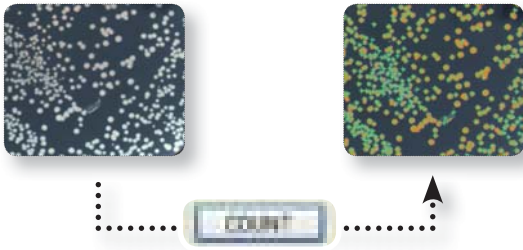
- ▶ Ultra-HD resolution image
- ▶ 360° lighting of the dish reflection and shadow free
- ▶ Largest reading range on the market

Scan® Colony counting & inhibition zone software

With Scan® Software delivered with Scan® automatic colony counters, enjoy quick and efficient colony counting on numerous media with full traceability.

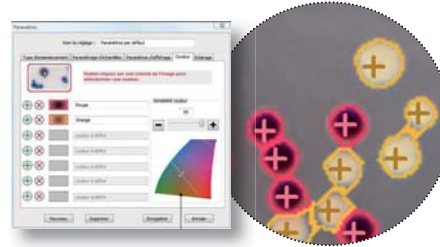
Instant results

Thanks to the live image display of the Petri dish on your computer, count up to **1000 CFU/sec.** on all media. Each counted colony is marked with a cross and the result is automatically saved.



Color detection & chromogenic media

Scan® 500, Scan® 1200 and Scan® 4000 can read chromogenic agar and differentiate colonies by color: **up to 7 different colors on the same Petri dish.** Save your parameters for the next counting in chromogenic environments.



No settings

Choose your pre-set parameters for Petri dishes:

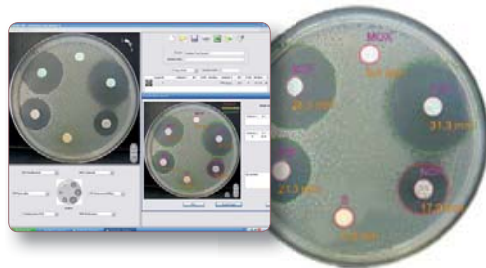


Also available on **Scan® 1200** and **Scan® 4000:**

- Sanita-kun™: AC, CC, EC/CC, SA
- Petrifilm™: AC, ETB, CC, EC/CC, EC
- Compact Dry™: TC, CF, EC, ETB

Antibiogram analysis

The inhibition zone measurement gives immediate results for the testing of the effectiveness of antibiotics by measuring the diameter of its action. The R.I.S results (Resistant/Intermediate/Susceptible) are given immediately by color.



Security of the sessions

The counting sessions are secured by a security code per operator and the saving of each count is unalterable. Compliant with CFR 21 part 11:

- security of the systems
- operational controls
- documentation management.

CFR 21
part 11



Plate & Count system[®] with dataLink[™]



Increase your lab capacity!

easySpiral Dilute[®] and Scan[®] 4000

dataLink[™] is a full traceability system for the microbiological analysis of a sample, from plating to colony counting with easySpiral[®] automatic platers and Scan[®] automatic colony counters.

All plating data (volume, dilution, time, mode ...) is stored on a Datamatrix or QR Code label placed on the Petri dish. No database is needed.

After incubation, the Datamatrix label is scanned and read by the Scan[®] software and retrieves all the sample information, from the plating to the colony counter settings.

Simply press "COUNT". There is no more time-consuming data double input and potential errors. Export the results, pictures and comments to LIMS*, Excel[™], PDF, JPEG.

► Secured analyses

- Full traceability
- Error-free settings

► Time-saving

- No manual data input
- Automatic settings of the Scan[®] colony counter

► User-friendly

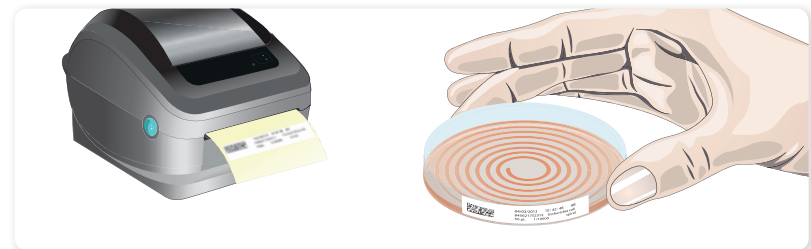
- Stand-alone system
- No database or network use

STEP 1



Plate with easySpiral[®] Pro or Dilute. easySpiral[®] software collects the plating data.

STEP 2



Print the label with Datamatrix code. Stick the label on the plated Petri dish and place in the incubator.

... Incubation 24-72 h

STEP 3



Once the colonies have grown, scan the Datamatrix code. The Scan[®] colony counter automatically adjusts its settings thanks to the Datamatrix label's data. Click on "COUNT". Export the data.

* Please check LIMS compatibility

Anabac[®] Autoclave deodorant

Anabac[®] provides a nice and fresh perfume in the lab after autoclaving.
Choose between 5 fragrances!



Classic

Strong fragrance

Mint and eucalyptus extracts



Poma

Fresh fragrance

Apple extracts



Citrus

Tonic fragrance

Lemon extracts



Floral

Spring fragrance

Flower extracts

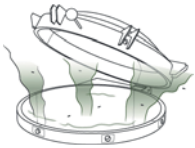


Peach

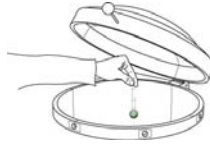
Sweet fragrance

Peach extracts

Fresh perfume in your lab!



The autoclave smells bad.



Drop 1 capsule in the autoclave water or in a recipient with water.



The air is purified with Anabac[®]

Technical specifications

Anabac [®]	Classic	Poma	Citrus	Floral	Peach
Pot of			100		
Reference	320 100	320 200	320 300	320 400	320 500

Applications

- Your work environment is nicely perfumed
- Melts without residue and has no effect on the disinfection process of the autoclave

Advantages

- ▶ Work comfort
- ▶ Compatible with any autoclave
- ▶ Totally safe for autoclaving
- ▶ French perfume
- ▶ 100 % biodegradable

Product specifications



Order by pallet to save money



BLENDER BAGS	Reference	Qty per box	Pack of	Max blending volume	Optimal blending volume	Box dim.	Gross weight
BagFilter®: Lateral filter blender bags							
BagFilter® P 400	111 425	500	25	400 mL	50 - 300 mL	35 x 22 x 15 cm	5.0 kg
BagFilter® P 400 unmarked	111 000	500	25	400 mL	50 - 300 mL	35 x 22 x 15 cm	5.0 kg
BagFilter® S 400	112 425	500	25	400 mL	50 - 300 mL	35 x 22 x 15 cm	5.0 kg
BagFilter Pull-Up® 400	111 625	500	25	400 mL	50 - 300 mL	34 x 22 x 12 cm	5.3 kg
BagFilter® P 2000	111 200	400	25	2000 mL	400 - 1500 mL	47.5 x 28.5 x 13.5 cm	6.7 kg
BagFilter® P 3500	113 510	100	10	3500 mL	400 - 3500 mL	41 x 33.5 x 11 cm	4.2 kg
BagPage®: Full-page filter blender bags							
BagPage® 100	121 025	500	25	100 mL	5 - 50 mL	34 x 22 x 12 cm	2 kg
BagPage® + 400	122 025	500	25	400 mL	50 - 300 mL	34 x 22 x 26 cm	6 kg
BagPage® + 400 unmarked	122 000	500	25	400 mL	50 - 300 mL	34 x 22 x 26 cm	6 kg
BagPage® F 400	122 325	500	25	400 mL	50 - 300 mL	34 x 22 x 26 cm	6 kg
BagPage® R 400	161 025	500	25	400 mL	50 - 300 mL	34 x 22 x 26 cm	6 kg
BagPage® U 400	122 225	500	25	400 mL	50 - 300 mL	34 x 22 x 26 cm	6 kg
BagPage® XR 400	122 425	400	25	400 mL	50 - 300 mL	34 x 22 x 26 cm	6.5 kg
BagPage® + 2000	122 200	250	25	2000 mL	400 - 1500 mL	47.5 x 28.5 x 13.5 cm	4.9 kg
BagPage® + 3500	123 010	100	10	3500 mL	400 - 3500 mL	41 x 33.5 x 11 cm	4.2 kg
BagLight®: Plain blender bags							
BagLight® PolySilk® 100	131 025	500	25	100 mL	5 - 50 mL	35 x 24 x 9 cm	1.7 kg
BagLight® PolySilk® 400	132 025	500	25	400 mL	50 - 300 mL	35 x 21 x 11 cm	4 kg
BagLight® HD PolySilk® 400	132 325	500	25	400 mL	50 - 300 mL	35 x 21 x 11 cm	4 kg
BagLight® Multilayer® 400	132 225	500	25	400 mL	50 - 300 mL	35 x 21 x 11 cm	5 kg
BagLight® Multilayer® U 400	132 125	500	25	400 mL	50 - 300 mL	35 x 21 x 11 cm	5 kg
BagLight® PolySilk® 2000	132 200	500	25	2000 mL	400 - 1500 mL	47.5 x 28.5 x 13.5 cm	9.6 kg
BagLight® PolySilk® 3500	133 025	250	25	3500 mL	400 - 3500 mL	44.5 x 25 x 35 cm	16 kg
RollBag®: Sampling blender bags							
RollBag® 1300	145 040	500	1	1300 mL	50 - 300 mL	34 x 28 x 11 cm	4.2 kg



GRAVIMETRIC DILUTORS	Reference	Qty per box	Specifications	Box dim.	Gross weight
DiluFlow®: Gravimetric dilutor & accessories					
DiluFlow® single pump (3 kg)	501 103	1	Gravimetric dilutor (3 kg) 1 pump	54.5 x 54.5 x 42.5 cm	14.8 kg
DiluFlow® double pump (3 kg)	501 203	1	Gravimetric dilutor (3 kg) 2 pumps	54.5 x 54.5 x 42.5 cm	17.6 kg
Adjustable distribution system	505 004	1	Ideal to fill various containers	35 x 30 x 20 cm	1.2 kg
DiluFlow® Pro: Gravimetric dilutor & accessories					
DiluFlow® Pro single pump (5 kg)	502 105	1	Gravimetric dilutor (5 kg) 1 pump	54.5 x 54.5 x 55 cm	17.4 kg
DiluFlow® Pro double pump (5 kg)	502 205	1	Gravimetric dilutor (5 kg) 2 pumps	54.5 x 54.5 x 55 cm	20 kg
Adjustable distribution system	505 005	1	Ideal to fill various containers	25 x 15 x 10 cm	600 g
Jumbo kit	505 006	1	BagOpen® 3500 + 3500 mL DripTray	50 x 40 x 40 cm	3 kg



GRAVIMETRIC DILUTORS	Reference	Qty per box	Specifications	Box dim.	Gross weight
DiluFlow® Elite: Gravimetric dilutor & accessories					
DiluFlow® Elite single pump (1 kg)	503 101	1	Gravimetric dilutor (1 kg) 1 pump	54.5 x 54.5 x 55 cm	18 kg
DiluFlow® Elite double pump (1 kg)	503 201	1	Gravimetric dilutor (1 kg) 2 pumps	54.5 x 54.5 x 55 cm	20.6 kg
DiluFlow® Elite single pump (5 kg)	503 105	1	Gravimetric dilutor (5 kg) 1 pump	54.5 x 54.5 x 55 cm	18 kg
DiluFlow® Elite double pump (5 kg)	503 205	1	Gravimetric dilutor (5 kg) 2 pumps	54.5 x 54.5 x 55 cm	20.6 kg
Adjustable distribution system	505 005	1	Ideal to fill various containers	25 x 15 x 10 cm	600 g
Jumbo kit	505 006	1	BagOpen® 3500 + 3500 mL DripTray	50 x 40 x 40 cm	3 kg
Pump module	505 007	1	External module with single pump + Set of silicone tubings inner ø 6.4 mm + GL45 screw cap + tube weight + nozzle + filter	23 x 31 x 27 cm	5.3 kg
6 nozzles holder	505 008	1	Can hold up to 6 nozzles	12 x 10 x 8 cm	300 g
Bar-code reader	522 000	1	Bar-code reader	39 x 27 x 15 cm	1 kg
Handy gun	561 001	1	Dispensing control with handy gun including electronic start button	15 x 15 x 5 cm	0.1 kg
DiluFlow®, DiluFlow® Pro & DiluFlow® Elite: Accessories					
Film	410 130	1	Thermal transfer film	12 x 10 x 8 cm	300 g
Printer	410 150	1	Thermal printer (RS 232 and USB output)	37 x 35 x 25 cm	4 kg
2L bottles (GL45)	413 002	3	2 L GL45 glass bottle	37 x 37 x 37 cm	5 kg
Weighing platform	505 002	1	To weigh and support a container	25 x 15 x 10 cm	600 g
Tongs platform	505 003	1	To hold a tube (ø 10 to 60 mm)	25 x 20 x 10 cm	1 kg
GeckoGrips	505 009	10	Set of 10 adhesives for BagOpen®	12 x 10 x 8 cm	250 g
Integrable stand for broth bags	505 010	1	Integrated to the unit, to hold one broth bag	40 x 30 x 18 cm	1.5 kg
Foot pedal	507 008	1	For hands-free dispensing. Connection with a 3.5 mm Jack	15 x 10 x 10 cm	0.15 kg
Adjustable nozzles (ø 3.2 mm)	505 012	5	Set of 5 adjustable nozzles (Length: 23.5 cm - For inner ø 3.2 mm tubings)	Zip bag: 27 x 42 cm	350 g
Adjustable nozzles (ø 6.4 mm)	505 013	5	Set of 5 adjustable nozzles (Length: 12 cm - For inner ø 6.4 mm tubings)	Zip bag: 14 x 8 cm	200 g
Booster kit	511 000	1	Booster pump + 2 silicone tubings for pump part (20 cm each), inner ø 6.4 mm + 2 "Y"	39 x 17 x 15 cm	1.1 kg
5L bottle (GL45)	513 001	1	5 L autoclavable bottle	37 x 35 x 25 cm	2.5 kg
Certified standard weight (500 g)	513 005	1	500 g COFRAC calibrated weight, type F1	25 x 10 x 10 cm	0.8 kg
Booster kit dispensing assembly (GL45 - ø 3.2 mm)	513 008	1	Set of silicone tubings inner ø 3.2 mm + GL45 screw cap + tube weight + nozzle + filter "Y"	39 x 27 x 15 cm	0.7 kg
Tubings + Y (ø 3.2 mm)	513 009	5	Set of 5 silicone tubings for booster kit inner ø 3.2 mm with plastic connectors "Y"	Zip Bag: 35 x 45 cm	628 g
Independent stand for broth bags	513 015	1	Independent stand for 2 broth bags	59 x 37 x 29 cm	2.5 kg
Trocar	513 020	1	Trocar for broth bags	12 x 10 x 8 cm	0.1 kg
PTFE filters 0.2 µm (ø 25 mm)	513 023	5	Set of 5 autoclavable filters (0.2 µm) for GL45 bottle	12 x 10 x 8 cm	0.2 kg
Nozzles (tubings ø 4.8 - 8 mm)	513 024	5	Set of 5 stainless steel nozzle for tubings from 4.8 to 8 mm inner diameter	15 x 15 x 6 cm	0.2 kg
Tube weights (ø 6 mm)	513 039	5	Set of 5 tube weights - ø 6 mm	Zip Bag: 8 x 12 cm	275 g
Nozzles (tubings ø 1.6 - 3.2 mm)	513 040	5	Set of 5 stainless steel nozzle for tubings from 1.6 to 3.2 mm inner diameter	Zip Bag: 8 x 12 cm	69.8 g
Booster kit dispensing assembly (GL45 - ø 6.4 mm)	513 041	1	Set of silicone tubings inner ø 6.4 mm + GL45 screw cap + tube weight + nozzle + filter + "Y"	Zip Bag: 23 x 35 cm	228.8 g
Tubings + Y (ø 6.4 mm)	513 042	5	Set of 5 silicone tubings inner ø 6.4 mm with plastic connectors "Y"	Zip bag: 35 x 45 cm	628 g
Dispensing assembly (GL45 - ø 6.4 mm)	513 043	1	Set of silicone tubings inner ø 6.4 mm + GL45 screw cap + tube weight + nozzle + filter	Zip bag: 23 x 35 cm	221 g
Tubings (ø 6.4 mm)	513 044	1	Set of 5 silicone tubings inner ø 6.4 mm	Zip bag: 35 x 45 cm	590.2 g
Dispensing assembly (GL45 - ø 3.2 mm)	513 045	1	Set of silicone tubings inner ø 3.2 mm + GL45 screw cap + tube weight + nozzle + filter	Zip bag: 23 x 35 cm	221 g
Tubings (ø 3.2 mm)	513 047	5	Set of 5 silicone tubings inner ø 3.2 mm	Zip bag: 35 x 45 cm	590.2 g
Stickers for printer	521 012	2	Sticker roll for thermal printer	20 x 10 x 10 cm	1.2 kg
Papers for printer	521 110	2	Thermal paper roll for printer	25 x 10 x 10 cm	1.5 kg
Tubings for pump (ø 3.2 mm)	561 302	6	Set of 6 silicone tubings for pump part (20 cm each), inner ø 3.2 mm	26 x 21 x 11 cm	0.2 kg



GRAVIMETRIC DILUTORS	Reference	Qty per box	Specifications	Box dim.	Gross weight
Tubings for pump (ø 6.4 mm)	561 304	6	Set of 6 silicone tubings for pump part (20 cm each), inner ø 6.4 mm	26 x 21 x 11 cm	0.2 kg
Autoclavable GL45 stopper + 0.2 µm filter	561 401	1	Autoclavable GL45 stopper + 0.2 µm filter	Zip bag: 10 x 12 cm	35 g
"Y" connectors (ø 6.4 - 8 mm)	561 402	6	Set of 6 plastic connectors "Y" - For inner ø 6.4 - 8 mm tubings	Zip bag: 14 x 8 cm	20 g



LAB BLENDERS	Reference	Qty per box	Specifications	Box dim.	Gross weight
MiniMix® 100: 100 mL lab blenders					
MiniMix® 100 P CC	011 230	1	Plain door, adjustable speed, Click & Clean® paddles	50 x 30 x 33 cm	13.4 kg
MiniMix® 100 W CC	013 230	1	Window door, adjustable speed, DripTray, Click & Clean® paddles	50 x 30 x 33 cm	13.4 kg
DripTray	016 000	1	Stainless steel security drip tray for MiniMix®	17.5 x 10 x 2 cm	0.2 kg
BagMixer® 400: 400 mL lab blenders					
BagMixer® 400 P	021 230	1	Plain door	49.5 x 35 x 36.5 cm	18.6 kg
BagMixer® 400 W	022 230	1	Window door, DripTray	49.5 x 35 x 36.5 cm	18.8 kg
BagMixer® 400 CC	024 230	1	Window door, adjustable speed, adjustable paddles, DripTray, Click & Clean® paddles	49.5 x 35 x 36.5 cm	18.6 kg
BagMixer® 400 S	025 000	1	Super silent, integrated DripTray, TotalAccess System, LightCode System, adjustable speed, adjustable Click & Clean® paddles	56 x 41 x 50 cm	28.6 kg
BagMixer® 400 SW	025 100	1	Double layer window door, Liquid Sensor, Super silent, integrated DripTray, TotalAccess System, LightCode System, adjustable speed, adjustable Click & Clean® paddles	56 x 41 x 50 cm	28.2 kg
DripTray	026 000	1	Stainless steel security drip tray for BagMixer® 400	23 x 12 x 2.3 cm	330 g
Starter pack	110 000	1	1 BagMixer® + 500 BagFilter® + 500 BagLight® + 50 BagClip® + 1 BagOpen® + 1 BagRack®	-	-
Classic pack	110 100	1	1 BagMixer® + 500 BagFilter® + 500 BagLight® + 500 BagPage® + 1 BagOpen® + 1 BagRack® + 50 BagClip® + 1 PetriPile® + 1 BagPipet® + 1 000 BagTips® Regular	-	-
Premium pack	500 000	1	1 BagMixer® + 1 DiluFlow® + 1000 BagFilter® + 2000 BagLight® + 1000 BagPage® + 1 BagOpen® + 2 BagRack® + 50 BagClip® + 2 PetriPile® + 1 BagPipet® + 1000 BagTips® Regular	-	-
JumboMix® 3500: 3500 mL lab blenders					
JumboMix® 3500 VP	031 230	1	Plain door, digital screen, adjustable speed, adjustable paddles	62 x 58 x 58 cm	61 kg
JumboMix® 3500 VW	032 230	1	Window door, digital screen, adjustable speed, adjustable paddles, DripTray	62 x 58 x 58 cm	58.2 kg
JumboMix® 3500 WarmMix®	033 230	1	Plain door, digital screen, adjustable speed, adjustable paddles, regulated temperature up to 50°C (122°F)	62 x 58 x 58 cm	61 kg
JumboStand	037 000	1	Ergonomic table for JumboMix® 3500	60 x 52 x 26 cm	16 kg
DripTray	036 000	1	Stainless steel security drip tray for JumboMix®	46 x 12.5 x 2.5 cm	0.6 kg



ACCESSORIES	Reference	Qty per box	Specifications	Box dim.	Gross weight
BagTools®: Laboratory accessories					
BagOpen® 80/100	211 010	1	80 mL and 100 mL bag opener/holder	23 x 12 x 5 cm	200 g
BagOpen® 400	211 040	1	400 mL bag opener/holder	26 x 16 x 6.2 cm	540 g
BagOpen® 3500	211 350	1	3500 mL bag opener/holder	45 x 20 x 5 cm	2 kg
BagRack® 80/100	221 010	1	Stainless steel stackable storage rack for 11 bags of 80/100 mL	28.5 x 14.5 x 16 cm	0.8 kg
BagRack® 400	221 040	1	Stainless steel stackable storage rack for 10 bags of 400 mL	37 x 22 x 22 cm	1.4 kg
DripTray	221 042	1	Stainless steel security drip tray for BagRack® 400	36 x 22.2 x 3 cm	880 g
BagRack® 3500 (4 comp.)	221 350	1	Stainless steel stackable storage rack for 4 bags of 3500 mL	50.5 x 41.5 x 42.5 cm	3 kg
BagRack® 3500 (2 comp.)	221 352	1	Stainless steel stackable storage rack for 2 bags of 3500 mL	39 x 29 x 26 cm	1.3 kg
BagClip® 80/100	231 010	50	Closing clips 13 cm (for 80 mL and 100 mL bags)	21.5 x 15 x 5.5 cm	550 g
BagClip® 400	231 040	50	Closing clips 19.5 cm (for 400 mL bags)	27 x 19 x 6.5 cm	750 g
BagClip® 3500	231 350	50	Closing clips 39.5 cm (for 3500 mL bags)	51 x 10 x 12 cm	1.6 kg
PetriPile® 55	241 055	1	Stainless steel storage rack for 36 Petri dishes of ø 55 mm	28 x 23 x 15 cm	1 kg





ACCESSORIES	Reference	Qty per box	Specifications	Box dim.	Gross weight
PetriPile® 65	241 065	1	Stainless steel storage rack for 36 Petri dishes of ø 65 mm	31 x 23 x 15.5 cm	1 kg
PetriPile® 90	241 090	1	Stainless steel storage rack for 36 Petri dishes of ø 90 mm	39 x 27.5 x 15 cm	1.5 kg
PetriPile® 150	241 150	1	Stainless steel storage rack for 16 Petri dishes of ø 150 mm	40.5 x 41.5 x 16.5 cm	1.2 kg
BagPipet®	251 091	1	Autoclavable pipet with fixed volume: 0.1 mL/0.9 mL/1 mL with BagTips®	30 x 10 x 6 cm	250 g
BagTips® (Regular)	252 019	1000	Rigid straw radiosterilized by 25 (19 cm)	27.5 x 23 x 11 cm	1.2 kg
BagTips® (Jumbo)	252 024	1000	Rigid straw radiosterilized by 25 (24 cm)	27.5 x 23 x 11 cm	1.5 kg
BagSeal® 400	261 000	1	Thermal sealing unit for 400 mL bags	49.5 x 39.5 x 49 cm	13.6 kg
Maintenance kit for BagSeal®	261 500	1	2 welding threads + 2 fuses + 2 Teflon cloths	35 x ø 4 cm	100 g



DISPENSING PUMPS	Reference	Qty per box	Specifications	Box dim.	Gross weight
FlexiPump®: Peristaltic pumps for culture media preparation					
FlexiPump®	561 000	1	Liquid dispensing pump. Single pump head	50 x 40 x 40 cm	8 kg
FlexiPump® Pro	562 000	1	Liquid dispensing pump. Low pulsation double pump head	50 x 40 x 40 cm	8.4 kg
FlexiPump®: Accessories					
Film	410 130	1	Thermal transfer film	12 x 10 x 8 cm	300 g
Printer	410 150	1	Thermal printer (RS 232 and USB output)	37 x 35 x 25 cm	4 kg
2L bottles (GL45)	413 002	3	2 L GL45 glass bottle	37 x 37 x 37 cm	5 kg
Tube weights (ø 3 mm)	413 028	5	Tube weights (ø 3 mm)	Zip bag: 8 x 12 cm	34.2 g
Foot pedal	507 008	1	For hands-free dispensing. Connection with a 3.5 mm Jack	15 x 10 x 10 cm	0.15 kg
5L bottle (GL45)	513 001	1	5 L autoclavable bottle	37 x 35 x 25 cm	2.5 kg
Tubings for pump (ø 4.8 mm)	513 011	6	Set of 6 silicone tubings for pump part (20 cm each), inner ø 4.8 mm	26 x 21 x 11 cm	0.28 kg
Independent stand for broth bags	513 015	1	Independent stand for 2 broth bags	59 x 37 x 29 cm	2.5 kg
Pump head	513 017	1	Peristaltic pump head (Watson Marlow®)	15 x 15 x 6 cm	0.4 kg
Trocar	513 020	1	Trocar for broth bags	12 x 10 x 8 cm	0.1 kg
PTFE filters 0.2 µm (ø 25 mm)	513 023	5	Set of 5 autoclavable filters (0.2 µm) for GL45 bottle	12 x 10 x 8 cm	0.2 kg
Nozzles (ø 4.8 - 8 mm)	513 024	5	Set of 5 stainless steel nozzle for tubings from 4.8 to 8 mm inner diameter	15 x 15 x 6 cm	0.2 kg
Tube weights (ø 6 mm)	513 039	5	Set of 5 tube weights - ø 6 mm	Zip Bag: 8 x 12 cm	275 g
Nozzles (tubings ø 1.6 - 3.2 mm)	513 040	5	Set of 5 stainless steel nozzle for tubings from 1.6 to 3.2 mm inner diameter	Zip Bag: 8 x 12 cm	69.8 g
Stickers for printer	521 012	2	Sticker roll for thermal printer	20 x 10 x 10 cm	1.2 kg
Papers for printer	521 110	2	Thermal paper roll for printer	25 x 10 x 10 cm	1.5 kg
Handy gun	561 001	1	Dispensing control with handy gun including electronic start button	15 x 15 x 5 cm	0.1 kg
Adjustable dispensing arm	561 002	1	For use with other containers	34 x 22 x 12 cm	0.6 kg
Dispensing assembly (GL45 - ø 1.6 mm)	561 101	1	Set of silicone tubings inner ø 1.6 mm + GL45 screw cap + tube weight + nozzle + filter	39 x 27 x 15 cm	0.2 kg
Dispensing assembly (GL45 - ø 3.2 mm)	561 102	1	Set of silicone tubings inner ø 3.2 mm + GL45 screw cap + tube weight + nozzle + filter	39 x 27 x 15 cm	0.2 kg
Dispensing assembly (GL45 - ø 4.8 mm)	561 103	1	Set of silicone tubings inner ø 4.8 mm + GL45 screw cap + tube weight + nozzle + filter	39 x 27 x 15 cm	0.2 kg
Dispensing assembly (GL45 - ø 6.4 mm)	561 104	1	Set of silicone tubings inner ø 6.4 mm + GL45 screw cap + tube weight + nozzle + filter	39 x 27 x 15 cm	0.2 kg
Dispensing assembly (GL45 - ø 8 mm)	561 105	1	Set of silicone tubings inner ø 8 mm + GL45 screw cap + tube weight + nozzle + filter	39 x 27 x 15 cm	0.2 kg
Tubings (ø 1.6 mm)	561 201	5	5 sets of dispensing tubings inner ø 1.6 mm with plastic connectors	39 x 27 x 15 cm	0.9 kg
Tubings (ø 3.2 mm)	561 202	5	5 sets of dispensing tubings inner ø 3.2 mm with plastic connectors	39 x 27 x 15 cm	0.9 kg
Tubings (ø 4.8 mm)	561 203	5	5 sets of dispensing tubings inner ø 4.8 mm with plastic connectors	39 x 27 x 15 cm	0.9 kg
Tubings (ø 6.4 mm)	561 204	5	5 sets of dispensing tubings inner ø 6.4 mm with plastic connectors	39 x 27 x 15 cm	0.9 kg
Tubings (ø 8 mm)	561 205	5	5 sets of dispensing tubings inner ø 8 mm with plastic connectors	39 x 27 x 15 cm	0.9 kg





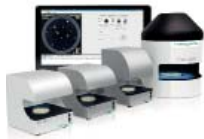
DISPENSING PUMPS	Reference	Qty per box	Specifications	Box dim.	Gross weight
Tubings for pump (ø 1.6 mm)	561 301	6	6 sets of silicone tubings for pump part (20 cm each). inner ø 1.6 mm	26 x 21 x 11 cm	0.2 kg
Tubings for pump (ø 3.2 mm)	561 302	6	6 sets of silicone tubings for pump part (20 cm each). inner ø 3.2 mm	26 x 21 x 11 cm	0.2 kg
Tubings for pump (ø 6.4 mm)	561 304	6	6 sets of silicone tubings for pump part (20 cm each). inner ø 6.4 mm	26 x 21 x 11 cm	0.2 kg
Tubings for pump (ø 8 mm)	561 305	6	6 sets of silicone tubings for pump part (20 cm each). inner ø 8 mm	26 x 21 x 11 cm	0.2 kg
"Y" connectors (ø 6.4 - 8 mm)	561 402	6	Set of 6 plastic connectors "Y" - For inner ø 6.4 - 8 mm tubings	Zip bag: 14 x 8 cm	20 g
Dispensing assembly + Y (GL45 - ø 1.6 mm)	562 101	1	Set of silicone tubings inner ø 1.6 mm + GL45 screw cap + tube weight + nozzle + filter + "Y"	39 x 27 x 15 cm	0.2 kg
Dispensing assembly + Y (GL45 - ø 3.2 mm)	562 102	1	Set of silicone tubings inner ø 3.2 mm + GL45 screw cap + tube weight + nozzle + filter + "Y"	39 x 27 x 15 cm	0.2 kg
Dispensing assembly + Y (GL45 - ø 4.8 mm)	562 103	1	Set of silicone tubings inner ø 4.8 mm + GL45 screw cap + tube weight + nozzle + filter + "Y"	39 x 27 x 15 cm	0.2 kg
Dispensing assembly + Y (GL45 - ø 6.4 mm)	562 104	1	Set of silicone tubings inner ø 6.4 mm + GL45 screw cap + tube weight + nozzle + filter + "Y"	39 x 27 x 15 cm	0.2 kg
Dispensing assembly + Y (GL45 - ø 8 mm)	562 105	1	Set of silicone tubings inner ø 8 mm + GL45 screw cap + tube weight + nozzle + filter + "Y"	39 x 27 x 15 cm	0.2 kg
Tubings + Y (ø 1.6 mm)	562 201	5	5 sets of dispensing tubings inner ø 1.6 mm with plastic connectors "Y"	39 x 27 x 15 cm	0.9 kg
Tubings + Y (ø 3.2 mm)	562 202	5	5 sets of dispensing tubings inner ø 3.2 mm with plastic connectors "Y"	39 x 27 x 15 cm	0.9 kg
Tubings + Y (ø 4.8 mm)	562 203	5	5 sets of dispensing tubings inner ø 4.8 mm with plastic connectors "Y"	39 x 27 x 15 cm	0.9 kg
Tubings + Y (ø 6.4 mm)	562 204	5	5 sets of dispensing tubings inner ø 6.4 mm with plastic connectors "Y"	39 x 27 x 15 cm	0.9 kg
Tubings + Y (ø 8 mm)	562 205	5	5 sets of dispensing tubings inner ø 8 mm with plastic connectors "Y"	39 x 27 x 15 cm	0.9 kg



AUTOMATIC PLATERS	Reference	Qty per box	Specifications	Box dim.	Gross weight
Spiral® system: easySpiral® diluter/platers					
easySpiral®	412 000	1	Spiral® plater	60 x 50 x 55 cm	24.6 kg
easySpiral Pro®	413 000	1	Spiral® plater with USB port	60 x 50 x 55 cm	24.6 kg
easySpiral Dilute®	414 000	1	Spiral® diluter and plater with USB port	60 x 50 x 55 cm	24.6 kg
Spiral® system: Accessories					
DataLink™	410 100	1	Traceability system	48.5 x 38.5 x 25 cm	4.4 kg
Stickers for printer	410 120	2 x 2500	Labels roll for thermal printer - Label size: 45 x 10 mm	Zip bag: 18 x 25 cm	997 g
Film	410 130	1	Thermal transfer film	12 x 10 x 8 cm	300 g
Housing protection for platers	413 001	1	Transparent housing for working outside laminar flow	59 x 37 x 29 cm	3 kg
2L bottles (GL45)	413 002	3	2 L GL45 glass bottle	37 x 37 x 37 cm	5 kg
Connection kit for GL45 bottle	413 003	1	Autoclavable connection set for GL45 bottle	12 x 10 x 8 cm	0.2 kg
Syringe (1 mL)	413 004	1	Syringe (capacity 1000 µL)	25 x 10 x 10 cm	0.2 kg
Tubings	413 006	1	Silicone tubing with filter for cleaning pump	12 x 10 x 8 cm	0.2 kg
Spiral® counting grid (90 mm)	413 014	1	Spiral counting grid for ø 90 mm Petri dishes	25 x 10 x 10 cm	0.3 kg
Filters for rinsing bath	413 009	2	Set of 2 filters for rinsing bath	12 x 10 x 8 cm	0.3 kg
Spiral® counting grid (150 mm)	413 015	1	Spiral counting grid for ø 150 mm Petri dishes	25 x 20 x 10 cm	0.3 kg
Support for Eppendorf™ 0.5 mL	413 016	1	Support for Eppendorf™ sample intake 0.5 mL	12 x 10 x 8 cm	0.2 kg
Support for Eppendorf™ 1.5 mL and 2 mL	413 017	1	Support for Eppendorf™ sample intake 1.5 mL and 2 mL	12 x 10 x 8 cm	0.2 kg
Support for Dilucup™	413 018	1	Support for Dilucup™ sample intake	12 x 10 x 8 cm	0.2 kg
Adjustable plate for Petri dish (90-150 mm)	413 019	1	Multiadaptable support for Petri dishes of 90 to 150 mm	25 x 10 x 10 cm	0.3 kg
Plate for Petri dish (50-65 mm)	413 020	1	Multiadaptable support for Petri dishes of 55 to 65 mm	25 x 10 x 10 cm	0.3 kg
Circle counting grid (90 mm)	413 026	1	Circle mode counting grid for ø 90 mm Petri dish	25 x 20 x 10 cm	0.3 kg
Circle counting grid (150 mm)	413 027	1	Circle mode counting grid for ø 150 mm Petri dish	25 x 20 x 10 cm	0.3 kg
EnzyClear®	413 029	1	Spiral plater detergent recommended for cleaning and pre-disinfection	ø 9 cm - H: 11 cm	365 g
Stylus (1 mL)	414 001	1	Stylus 1 mL	25 x 10 x 10 cm	0.5 kg



AUTOMATIC PLATERS	Reference	Qty per box	Specifications	Box dim.	Gross weight
Support for Eppendorf™ 1.5 mL	414 002	1	Support for Eppendorf™ sample intake 1.5 mL for easySpiral Dilute®	20 x 17 x 7 cm	250 g
Maintenance kit for platers (1 mL)	414 003	1	Maintenance kit including: 1 stylus, 1 syringe, 1 silicone tubing, 1 grease tube, 10 filters for pump	31 x 21.5 x 10 cm	497 g
Double connection kit for GL45 bottle	414 004	1	Double connection kit for GL45 bottle to be use on the same bottle	Zip bag: 18 x 25 cm	78.4 g
DB50 beakers	415 100	1 000	1 000 beakers for Spiral® plater (5 mL)	34 x 22 x 12 cm	1.5 kg
Blue dye for platers	415 530	1	Color dye for Spiral® tests (125 mL)	12 x 10 x 8 cm	0.2 kg
PTFE filters 0.2 µm (ø 25 mm)	513 023	5	Set of 5 autoclavable filters (0.2 µm)	12 x 10 x 8 cm	0.2 kg
Bar-code reader	522 000	1	Bar-code reader	39 x 17 x 8 cm	1 kg



COLONY COUNTERS	Reference	Qty per box	Specifications	Box dim.	Gross weight
Scan®: Colony counters					
Scan® 100	435 000	1	Manual colony counter	50 x 40 x 40 cm	7.2 kg
Scan® 300	436 300	1	Automatic colony counter	50 x 40 x 40 cm	11 kg
Scan® 500	436 000	1	Automatic colony counter & inhibition zone reader	50 x 40 x 40 cm	11 kg
Scan® 1200	437 000	1	High definition automatic colony counter & inhibition zone reader	57 x 42 x 42 cm	12.4 kg
Scan® 4000	438 000	1	Ultra High definition automatic colony counter & inhibition zone reader	60 x 63 x 80 cm	32 kg

Scan®: Accessories	Reference	Qty per box	Specifications	Box dim.	Gross weight
DataLink™	410 100	1	Traceability system	48.5 x 38.5 x 25 cm	4.4 kg
Stickers for printer	410 120	2 x 2500	Labels roll for thermal printer - Label size: 45 x 10 mm	Zip bag: 18 x 25 cm	997 g
Film	410 130	1	Thermal transfer film	12 x 10 x 8 cm	300 g
Magnifying lens for Scan® 100	435 001	1	Magnifying lens (x2) + 1 flexible arm for Scan® 100	26 x 16.5 x 10.5 cm	0.8 kg
Adaptors for Petrifilm™/Sanita-kun™/Compact Dry™	435 002	2	Adapter for Petrifilm™, Sanita-kun™, Compact Dry™ for Scan® 100	16.5 x 16 x 6.5 cm	0.25 kg
Spiral® DS counting grids	435 010	2	Spiral® DS counting grids: 1 transparent & 1 white diffusing background - 90 mm & 150 mm - For Scan® 100	16.5 x 16 x 6.5 cm	0.13 kg
Wolffhuegel counting grids	435 020	2	Wolffhuegel transparent and white counting grids for Scan® 100	16.5 x 16 x 6.5 cm	0.1 kg
Spiral® counting grids (90 mm)	435 030	2	easySpiral® counting grids: 1 transparent and 1 white diffusing background for Scan® 100	16.5 x 16 x 6.5 cm	0.1 kg
Spiral® counting grids (150 mm)	435 035	2	easySpiral® counting grids: 1 transparent and 1 white diffusing background for Scan® 100	16.5 x 16 x 6.5 cm	0.1 kg
Circle counting grids	435 037	2	easySpiral Dilute® circle counting grids: 90 mm & 150 mm 1 transparent and 1 white diffusing background for Scan® 100	Zip bag: 15 x 25 cm	84 g
Adaptor for Petri dish (55 mm)	436 005	1	Adapter for dishes of ø 55 mm for Scan® 300/500/1200	25 x 15 x 10 cm	0.2 kg
Adaptor for Sanita-Kun™	437 001	1	Adapter for Sanita-kun™ for Scan® 1200	25 x 15 x 10 cm	0.2 kg
Adaptor for PetriFilm™	437 002	1	Adapter for Petrifilm™ for Scan® 1200	25 x 15 x 10 cm	0.2 kg
Adaptor for Compact Dry™	437 004	1	Adapter for Compact Dry™ for Scan® 1200	25 x 15 x 10 cm	0.2 kg
Bar-code reader	522 000	1	Bar-code reader	39 x 17 x 8 cm	1 kg

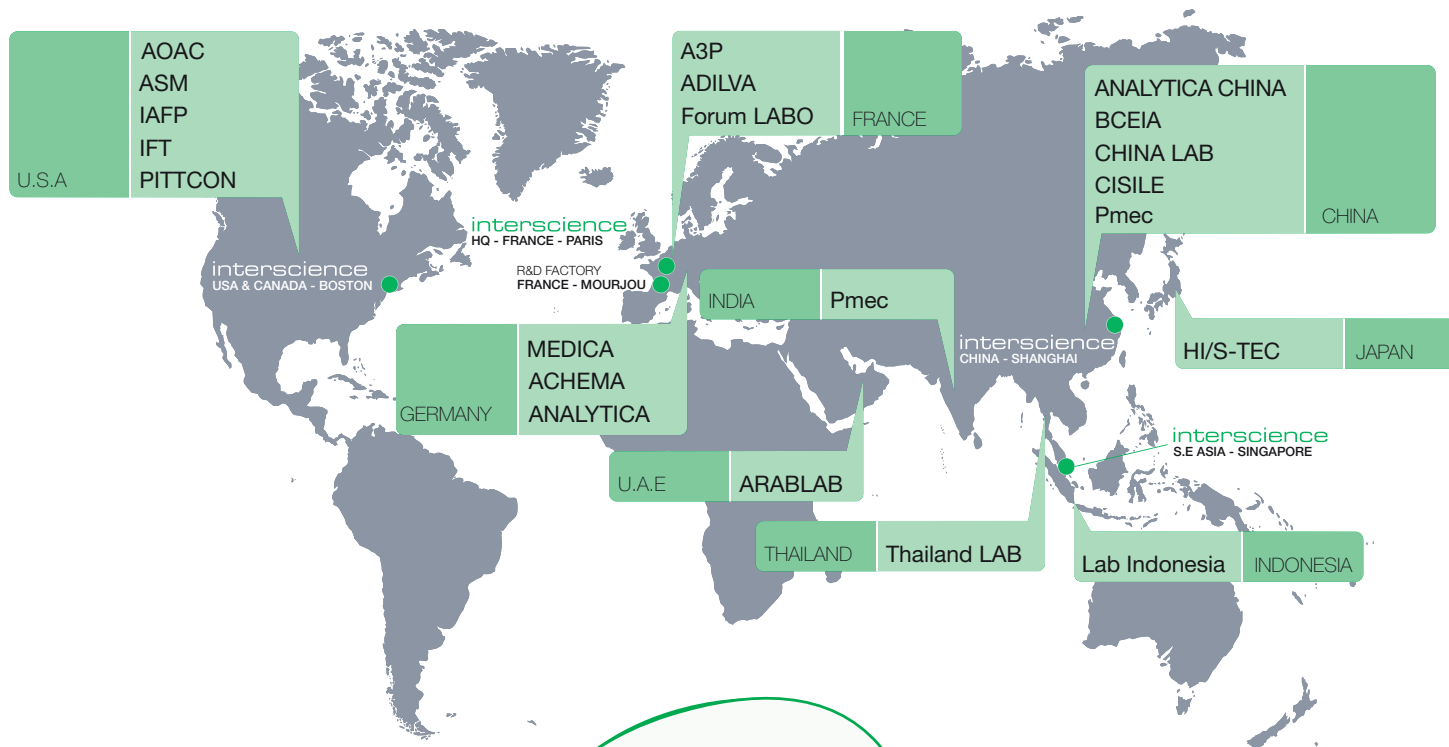


DEODORANT	Reference	Qty per box	Specifications	Box dim.	Gross weight
Anabac®: Autoclave deodorants					
Anabac® Classic	320 100	100	Box of 100 capsules (fragrance: mint/eucalyptus)	12 x 10 x 8 cm	160 g
Anabac® Poma	320 200	100	Box of 100 capsules (fragrance: apple)	12 x 10 x 8 cm	160 g
Anabac® Citrus	320 300	100	Box of 100 capsules (fragrance: lemon)	12 x 10 x 8 cm	160 g
Anabac® Floral	320 400	100	Box of 100 capsules (fragrance: flower)	12 x 10 x 8 cm	160 g
Anabac® Peach	320 500	100	Box of 100 capsules (fragrance: peach)	12 x 10 x 8 cm	160 g



Informations in this catalogue are not contractually binding. INTERSCIENCE reserves the right to change or improve the specifications of its products without notice. Please visit www.interscience.com for current updates and additional informations. Registered trademarks: AGARTOP®, Anabac®, BagBlender/Blender Bag®, BagClip®, BagControl®, BagFilter®, BagFilter PullUp®, BagFilter Universal Standard+logo®, BAGHOLDER®, BagLight®, BagLight Universal Standard+logo®, BagLite®, BagMixer®, BagMixer Crocodile®, BagOpen®, BagOpen GeckoGrip®, BagPage®, BagPage Universal Standard+logo®, Bag Pick Up – Pick Up Bag®, BagPipet®, BagPorter®, BagRack®, BagSeal®, Bagsystem®, BagTips®, BagTools®, Biobox®, BioParfum®, BioWaste®, Click and Clean®, Cline®, Cline Pick Up®, ColdBox®, CoolMix®, DataLink®, Diluflow®, Dilute®, Easy Claning System ECS®, Easy EZ Bag®, EASY EZ SPIRAL®, EasySpiral®, EasySpiral Dilute®, Easy Spiral Pro®, Ensemenceur Spiral®, EnzyClear®, FlexiPump®, Gravimat®, iBag®, iMix®, iNews®, INOXIDOL®, INTERBIO®, INTERFARM®, Interfarma®, INTERLAB®, INTERSCIENCE®, iSystem®, iTools®, JumboMix®, JumboGravimat®, JumboLine®, LedCounter®, Malaxeur MaxiMix Blender®, Malaxeur MiniMix®, MiniPump®, Microbio®, Microbio Science®, Microbiology World®, MULTIBAG®, Multilayer®, PetriPile®, PickupBag/BagPickup®, Pilo®, Plate & Count System®, Polyfil®, PolySilk®, Polysil®, Q-Tight®, RollBag®, SaniFood®, SCAN®, ScanProtocol®, ScanStation®, Sembrador Spiral®, Spiral®, Spiral Plater®, STOMAFILTER®, Systeme Spiral®, WarmMix®

Meet interscience at:



We speak English!
Nous parlons français !
¡Hablamos español!
Falamos Português!
Wir sprechen Deutsch!
Parliamo Italiano!
Мы говорим по-Русски!
我们会说中文！
日本語どうぞ！



Find all information on
www.interscience.com

- News
- Photos, video demos of products
- Brochures, technical files, press releases
- Scan® software demo
- Information request and order form
- Contact

Customer support:

Hot Line: +33 (0)1 34 62 63 24
Email: tech@interscience.com

- Recommendations for set-up
- Technical advice
- After-sales
- Skype™ Assistance



EN 2455 Catalogue 0917 Printed by Madanec



R&D Center and manufacturing plant, Mourjou, FRANCE.

www.interscience.com

To order:

Distributor

interscience

30, ch. Bois Arpents - 78860 St Nom - FRANCE
T: +33 (0)1 34 62 62 61 - F: +33 (0)1 34 62 43 03
Email: info@interscience.com

interscience CHINA

上海市徐汇区吴兴路277号锦都大厦588室-200030
电话: +86 (0)21-64739390 - +86 189 3097 0733
邮址: sales.china@interscience.com

interscience USA & CANADA

32 Cummings Park - Woburn, MA 01801 - USA
T: +1 781 937 0007 - F: +1 781 937 0017
Email: sales.usa@interscience.com

interscience SOUTH-EAST ASIA

The Centropod, 80 Changi Rd - 05-07 Singapore 419715
T: +65 6909 0825 - M: +65 8118 5178
E-mail: sales.asia@interscience.com